

Disaster Management

Inventory of Infrastructure for Emergency

Management



24-06-2020



Infrastructure

As on 24-6-2020

A) Health Infrastructure with beds	No. of Institutions	Capacity
Hospitals – DHS	1283	37,843
Hospitals – DME	10	11,678
Sree Chithra (SCTIMST)	1	250
Homeopathy	34	985
Indian Systems of Medicine	130	3515
Private Hospitals	676	82,081
Total	2,134	1,36,352
B) Facilities with Beds	No. of Institutions	Capacity
Hostels	1045	1,09,968
Hotels	2,523	44,804
Lodges	2,175	30,821
Resorts	721	10,232
Ayur Centres	128	1694
Total	6,592	1,97,519
C) Facilities without Beds		Rooms
Schools	11,937	1,69,646
ITI Institutions	57	220
Auditoriums	1,505	
Total	13,499	1,69,866
GRAND TOTAL (A + B + C)	22,225	5,03,737



ICUs and Ventilators

As on 24-6-2020

Health Infrastructure with beds	No. of Institutions	ICUs	Ventilators
Hospitals – DHS	1283	204	306
Hospitals – DME	10	1737	742
Sree Chithra (SCTIMST)	1	72	64
Private Hospitals	676	6079	1579
Total	2,134	8,092	2,691



Hospitals with beds - DME

Institution & District	Total Bed Strength
GMC Trivandrum	1953
GMC Kollam	300
GMC Alappuzha	1449
GMC Kottayam	1800
GMC Idukki	204
GMC Ernakulam	550
GMC Thrissur	1437
GMC Malappuram	556
GMC Kozhikode	2250
GMC Kannur	1179
Total	11,678

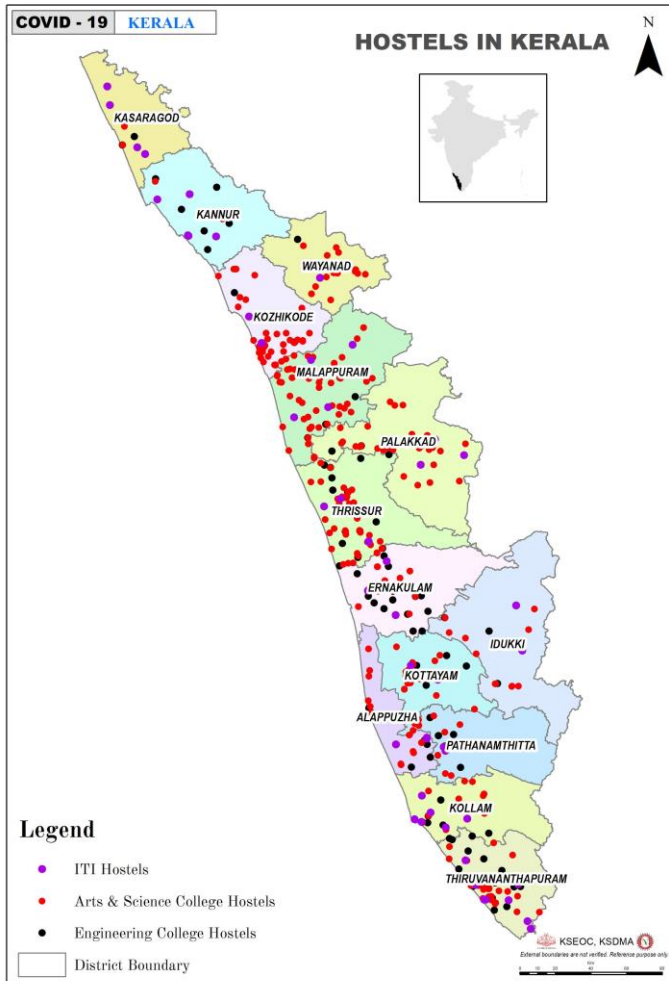


Hospitals with beds - Private

Districts	Health Care Facilities	Beds	ICU Bed	Ventilators
Tvm	62	8611	797	192
Kol	30	2376	199	42
Ptn	26	4532	498	90
Alp	23	1746	99	17
Ktm	26	4018	375	80
Idu	7	2021	0	36
Ekm	108	16675	1151	360
Tsr	80	9084	1017	192
Pkd	59	9367	472	106
Mal	88	7868	504	127
Koz	64	8663	538	251
Way	28	1842	117	22
Kan	44	3872	224	55
Kas	31	1406	88	9
Total	676	82,081	6079	1579



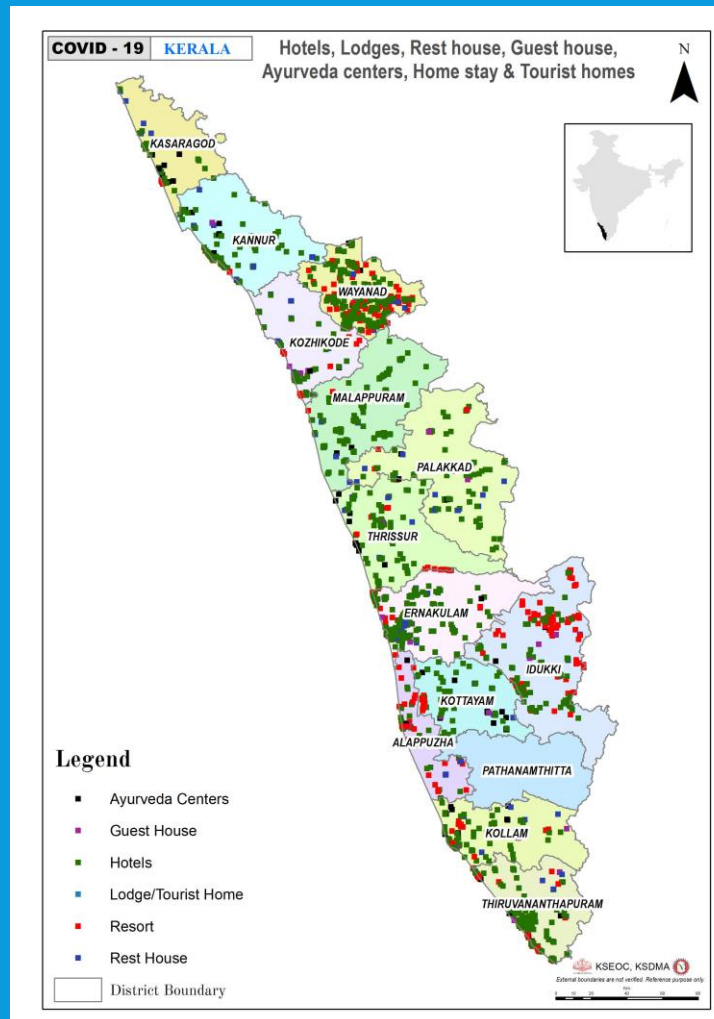
Hostels



Sl. No	District	No. of Insitutions	Total Capacity
1	Thiruvananthapuram	123	14494
2	Kollam	76	7706
3	Pathanamthitta	44	3414
4	Alappuzha	41	3960
5	Kottayam	48	5941
6	Idukki	58	4921
7	Ernakulam	100	11500
8	Thrissur	95	14849
9	Palakkad	114	8057
10	Malappuram	98	9523
11	Kozhikode	92	13511
12	Wayanad	46	4049
13	Kannur	85	6387
14	Kasaragod	25	1656
	Total	1045	1,09,968



Hotels, Lodges, Resorts, Ayur Centres



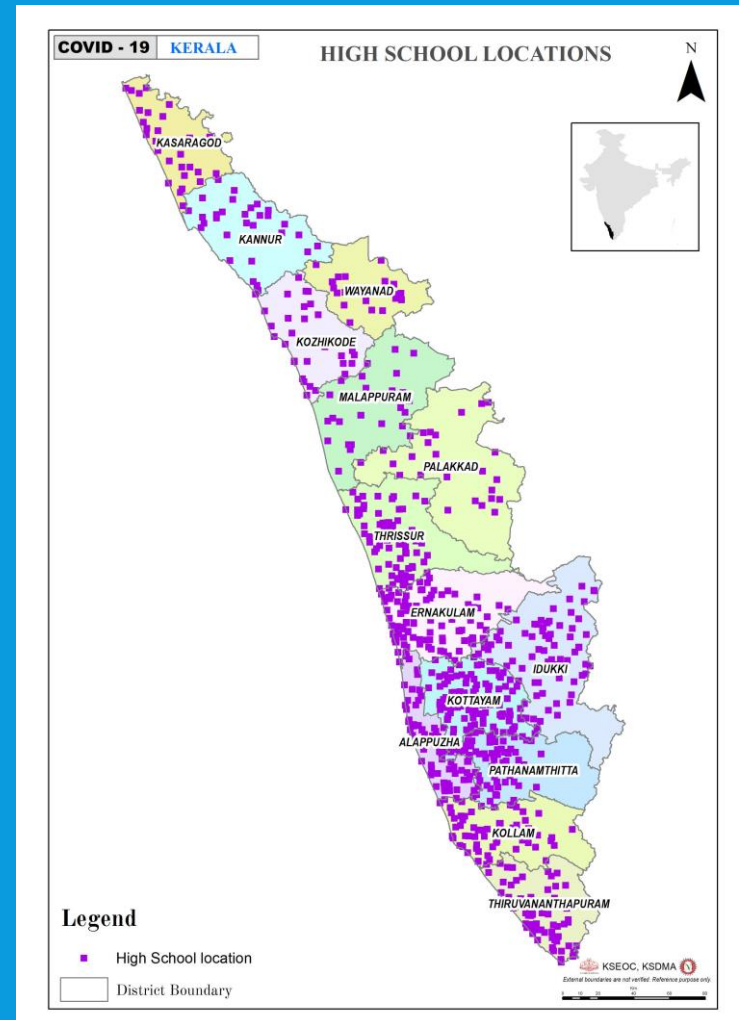
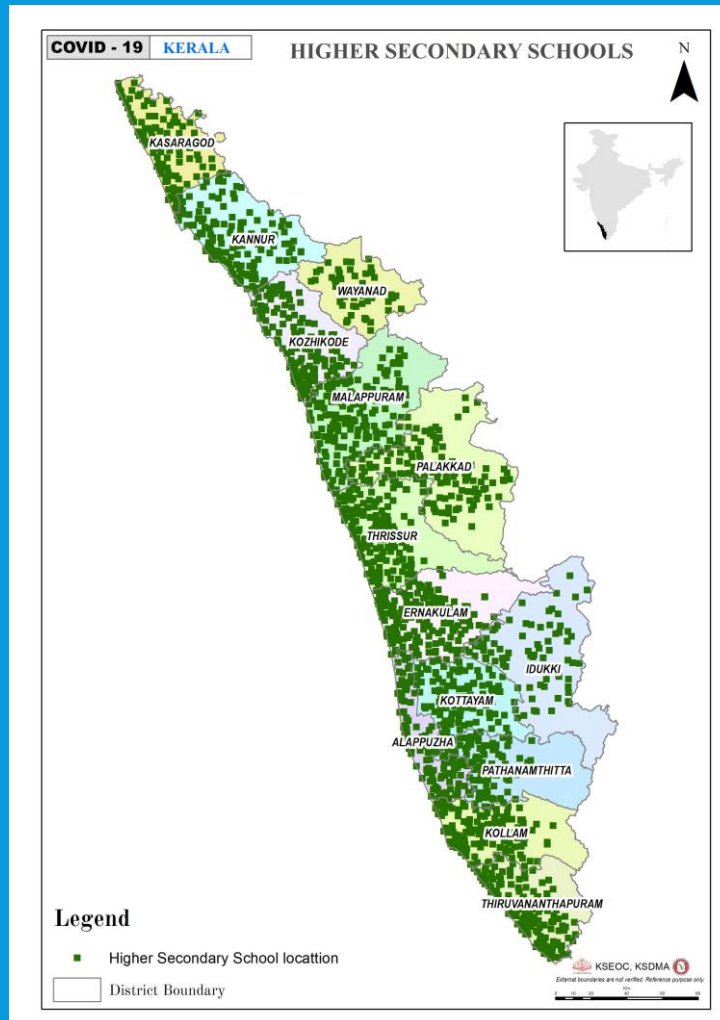


Hotels, Lodges, Resorts, Ayur Centres

Sl. No	District	Hotels		Lodges/Tourist Homes/Others		Resorts		Ayur centres		Total	
		Units	Rooms	Units	Rooms	Units	Rooms	Units	Rooms	Units	Rooms
1	Thiruvananthapuram	332	6662	294	4540	189	3476	26	342	841	15020
2	Kollam	89	1458	108	1553	12	132	11	109	220	3252
3	Pathanamthitta	59	1013	44	794	0	0	16	145	119	1952
4	Alappuzha	74	1079	86	783	47	364	5	47	212	2273
5	Kottayam	65	1099	62	871	25	683	9	51	161	2704
6	Idukki	290	4932	323	2948	193	2942	3	39	809	10861
7	Ernakulam	449	12602	458	4402	37	380	5	39	949	17423
8	Thrissur	201	4671	191	2996	26	480	15	289	433	8436
9	Palakkad	159	2109	95	1416	4	16	5	56	263	3597
10	Malappuram	245	3141	17	158	3	136	4	193	269	3628
11	Kozhikode	115	3547	124	2584	9	113	4	41	252	6285
12	Wayanad	364	3644	122	1307	85	626	7	77	578	5654
13	Kannur	156	2222	119	1969	12	93	8	111	295	4395
14	Kasaragod	46	852	47	1071	5	85	8	138	106	2146
Total		2644	49031	2090	27392	647	9526	126	1677	5507	87626

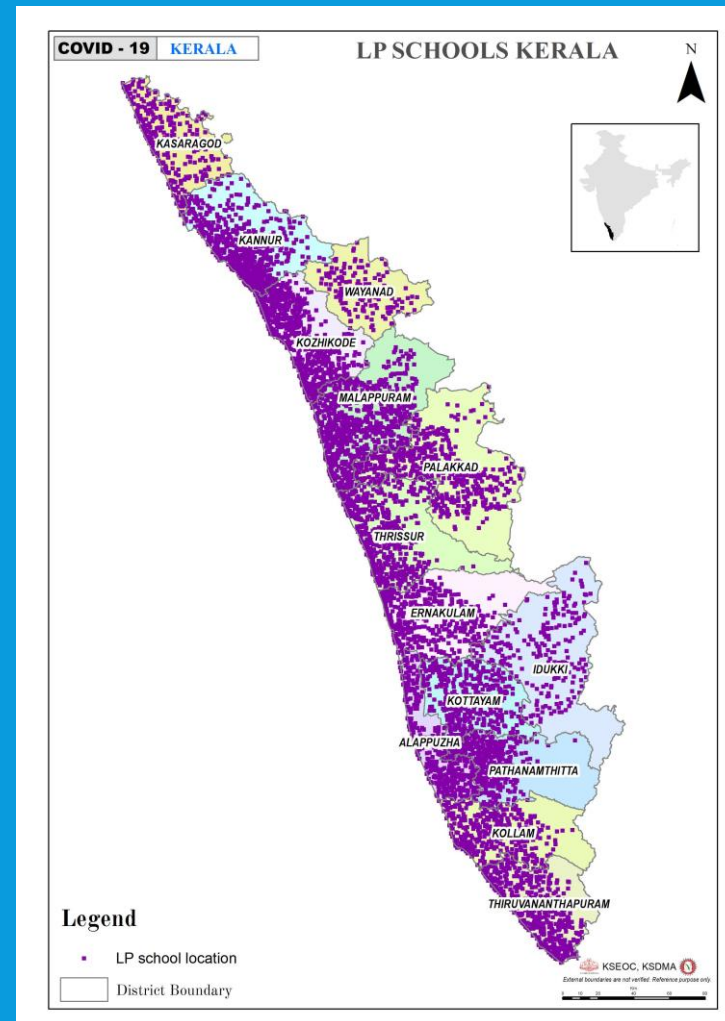
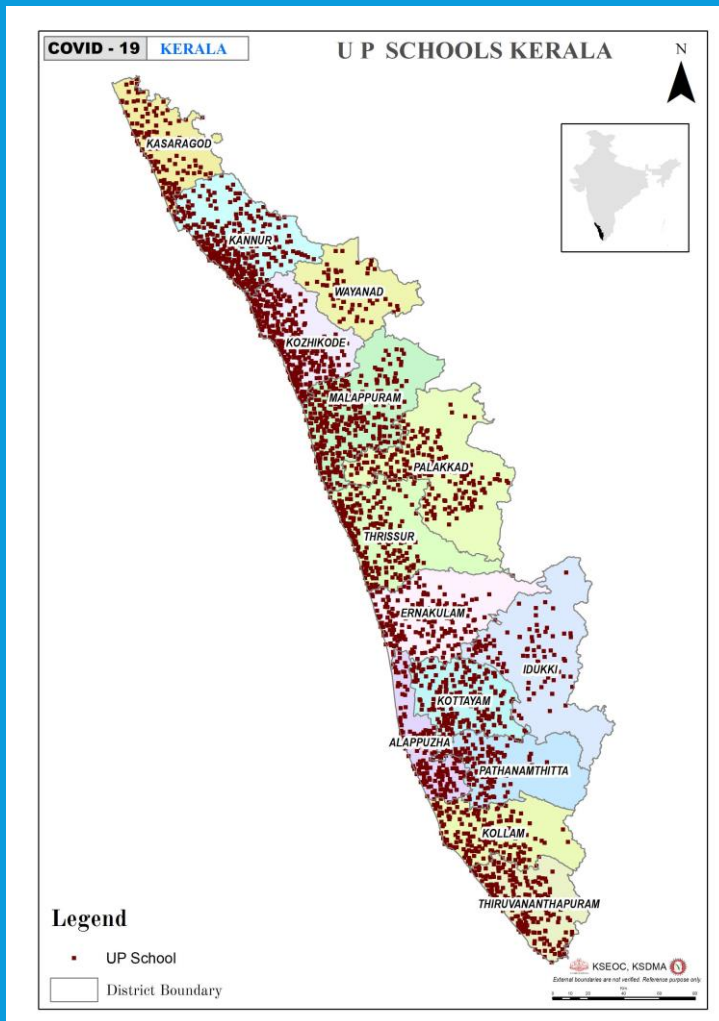


Higher Secondary & High Schools





UP and LP Schools



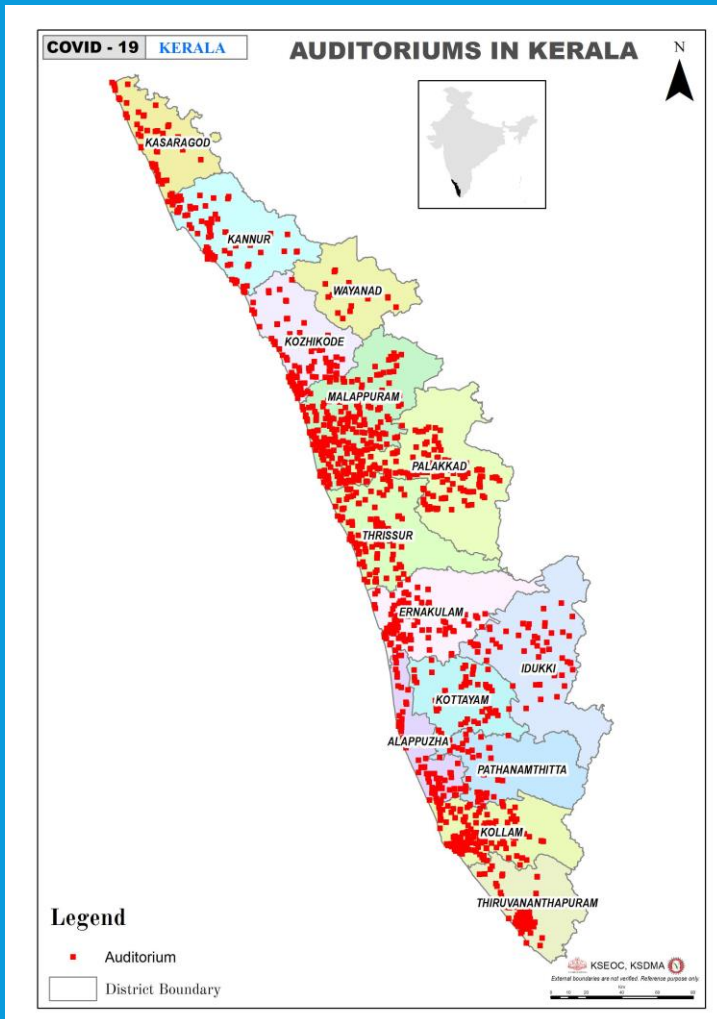


Schools

District	HS		HSS		LP		UP		Total Units	Total No of Class Rooms
	Units	Class Rooms	Units	Class Rooms	Units	Class Rooms	Units	Class Rooms		
Tvm	69	1502	158	5281	479	3915	197	2721	903	13419
Klm	65	1528	150	4906	454	3485	198	2630	867	12549
Ptn	68	969	96	2156	395	2001	129	1049	688	6175
Alp	76	1604	118	3597	386	2756	147	1784	727	9741
Ktm	111	1647	131	2909	428	2614	194	1911	864	9081
Idu	77	1062	78	1672	227	1529	86	985	468	5248
Ekm	104	2100	177	5330	432	3435	189	2323	902	13188
Tsr	75	2027	164	5618	486	4358	220	3509	945	15512
Pkd	34	807	137	5588	545	4270	203	4178	919	14843
Mal	29	963	175	8818	850	8011	325	7904	1379	25696
Koz	34	731	150	5741	705	4692	309	5560	1198	16724
Way	28	537	61	1859	138	930	62	1226	289	4552
Kan	31	597	148	5265	721	4337	346	5176	1246	15375
Kas	33	564	100	3229	279	1772	130	1978	542	7543
Total	834	16638	1843	61969	6525	48105	2735	42934	11,937	1,69,646



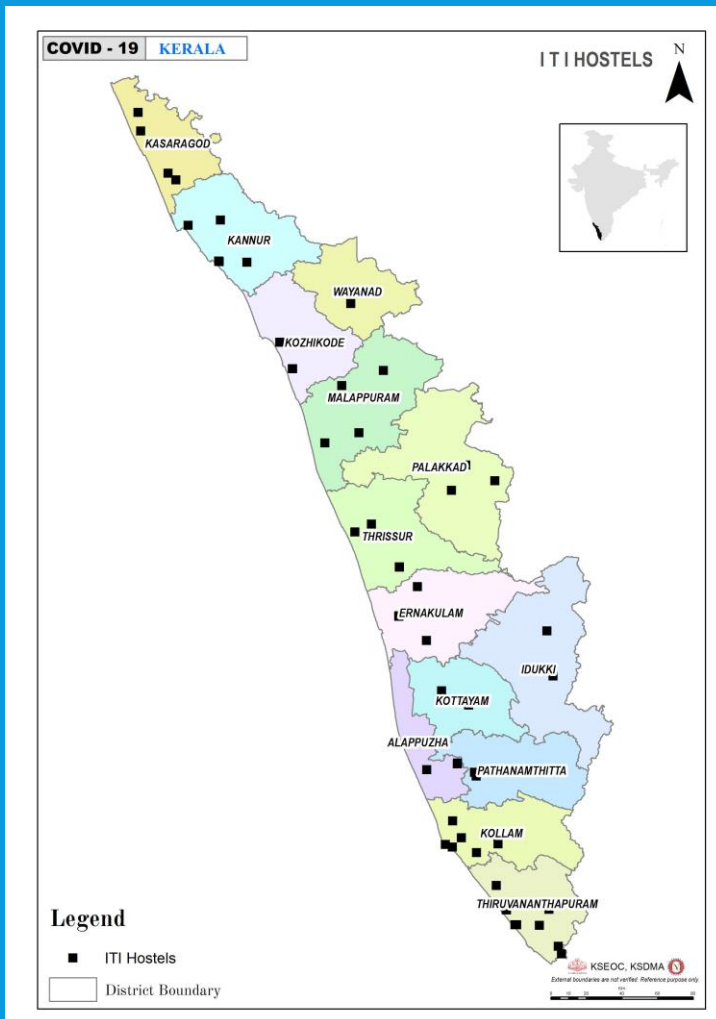
Additional Facilities – Auditorium



District	No: of Auditoriums
Thiruvananthapuram	118
Kollam	146
Pathanamthitta	50
Alppuzha	79
Kottayam	81
Idukki	60
Ernakulam	114
Thrissur	114
Palakkad	196
Malappuram	243
Kozhikode	124
Wayanad	15
Kannur	102
Kasaragod	63
Total	1505



Additional Facilities – ITI institutions



Sl. No	District	Total No of Institutions	Rooms
1	Tvm	9	35
2	Klm	6	16
3	Ptn	2	4
4	Alp	3	17
5	Ktm	2	9
6	Idu	2	12
7	Ekm	5	22
8	Tsr	5	16
9	Pkd	4	15
10	Mal	4	15
11	Koz	4	20
12	Way	1	3
13	Kan	5	19
14	Kas	5	17
	Total	57	220



Covid-19 Specific Infrastructure – Hospitals - Total

As on 24-6-2020

	Covid-19 Hospitals	Earmarked for Covid-19
Total Institutions	29	N/A
Total Beds	19,074	8537
Total ICU Beds	1590	872
Total Ventilators	869	482
CFTCs	29	29
CFTC Beds	3180	3180



Covid-19 Specific Infrastructure – Hospitals - District Wise

As on 24-6-2020

Districts	Institutions	Beds		ICU Bed		Ventilators	
		Total	Covid-19	Total	Covid-19	Total	Covid-19
Tvm	2	2586	1008	394	273	180	148
Kol	2	1287	1287	47	22	33	22
Ptn	2	648	323	12	12	19	14
Alp	2	1518	794	129	114	85	12
Ktm	2	2174	350	164	32	142	110
Idu	2	350	350	36	36	19	19
Ekm	2	600	600	120	120	64	46
Tsr	2	1745	329	110	82	46	11
Pkd	2	717	237	42	31	37	4
Mal	2	775	565	51	36	34	33
Koz	2	3515	1219	210	7	95	10
Way	1	274	316	26	26	14	14
Kan	4	2192	647	226	58	72	17
Kas	2	693	332	23	23	29	22
Total	29	19,074	8357	1590	872	869	482



Covid-19 Firstline Treatment Centre

As on 24-6-2020

Districts	Institutions	Beds
Tvm	2	250
Kol	2	130
Ptn	2	124
Alp	2	340
Ktm	2	220
Idu	2	150
Ekm	2	300
Tsr	2	160
Pkd	1	100
Mal	2	99
Koz	2	575
Way	1	30
Kan	4	498
Kas	3	204
Total	29	3180