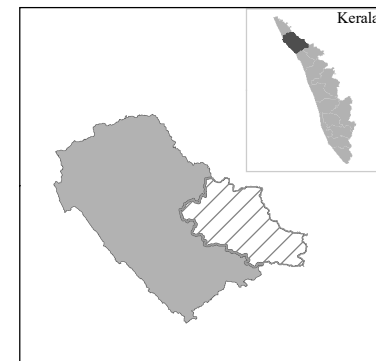
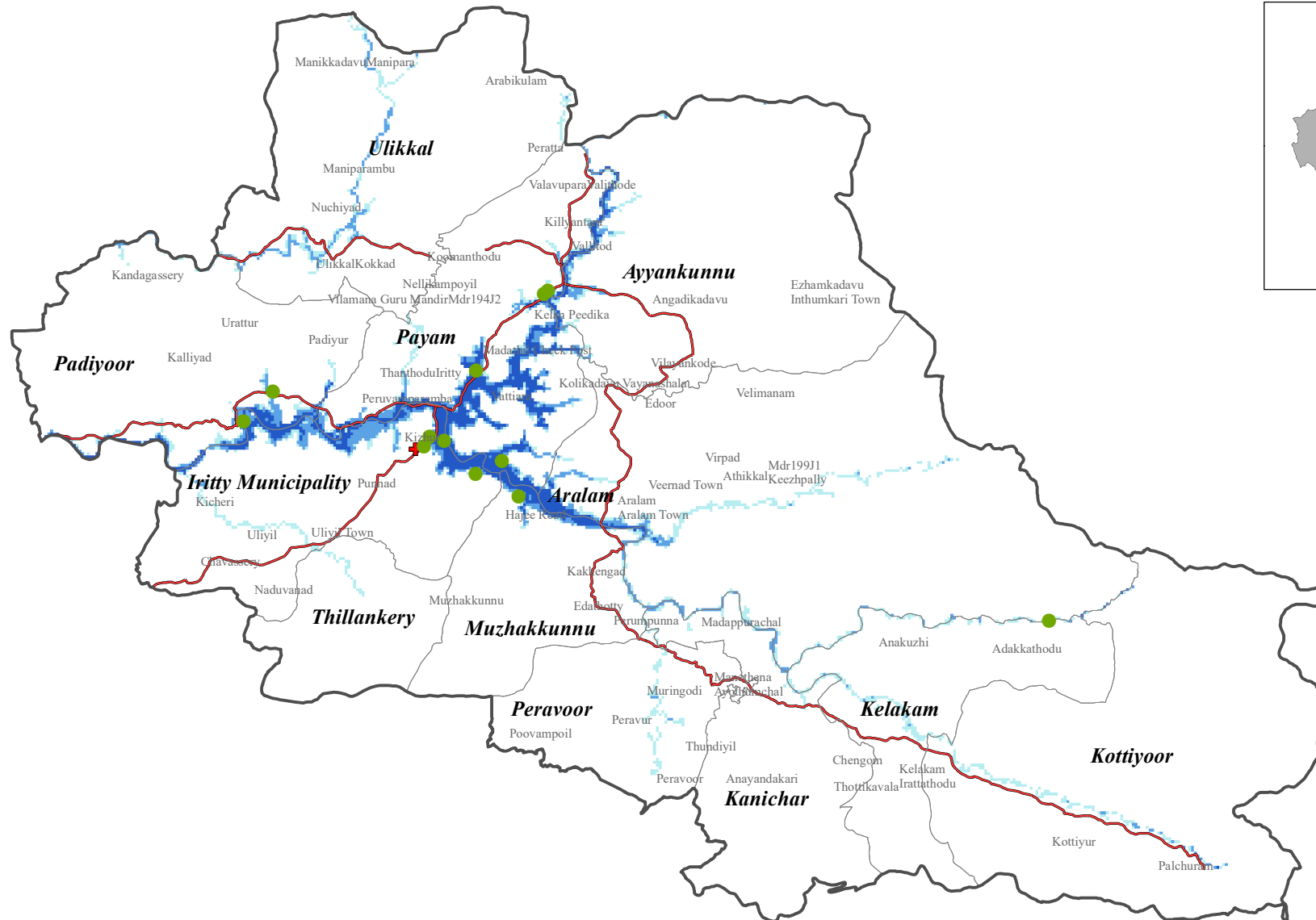


IRITTI TALUK (KANNUR DISTRICT) Flood Inundation (1 in 10 Year Return Probability)

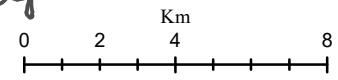


12°0'0"N

12°0'0"N

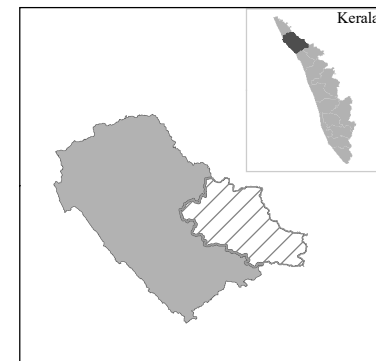


Flood Water Level (m)		Legend	
	<4		Taluk Boundary
	4-8		Local Government
	8-12		National Highway
	>12		State Highway
			Govt Schools
			Private Schools
			Hospital



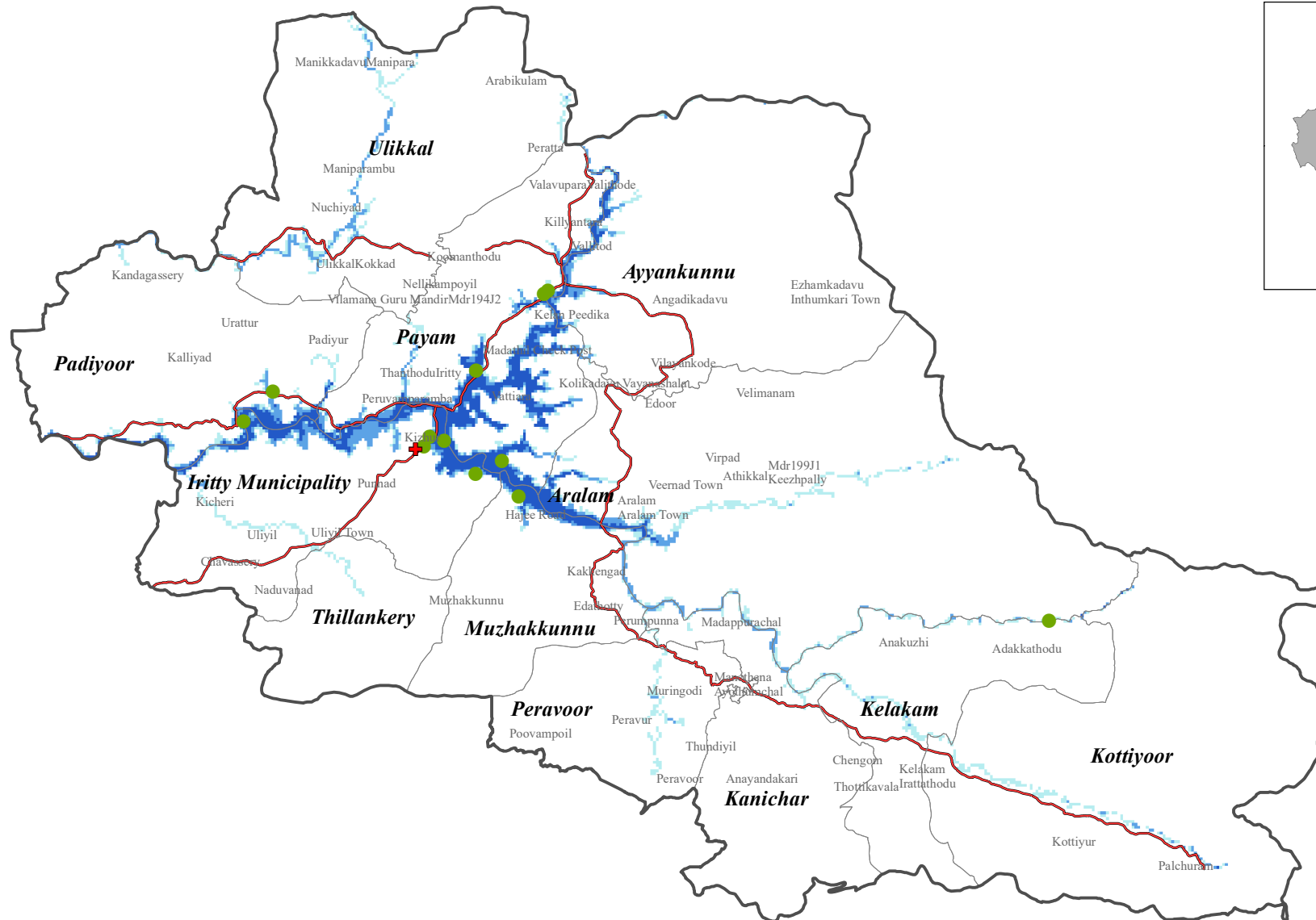
RISK LAB, KSEOC
 Kerala State Disaster Management Authority
 Thiruvananthapuram
External boundaries are not verified. Reference purpose only
 Source: KSREC, KSDMA, UNEP, UN GRID, CIMA (Italy)

IRITTI TALUK (KANNUR DISTRICT) Flood Inundation (1 in 25 Year Return Probability)

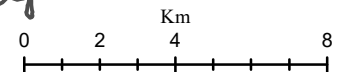


12°0'0"N

12°0'0"N

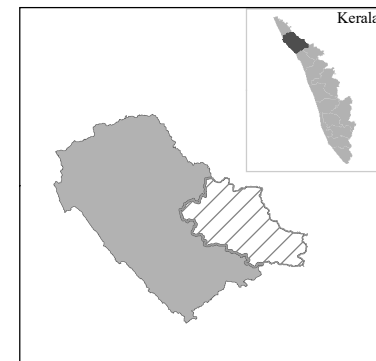


Flood Water Level (m)		Legend	
	<4		Taluk Boundary
	4-8		Local Government
	8-12		National Highway
	>12		State Highway
			Railway
			Govt Schools
			Private Schools
			Hospital



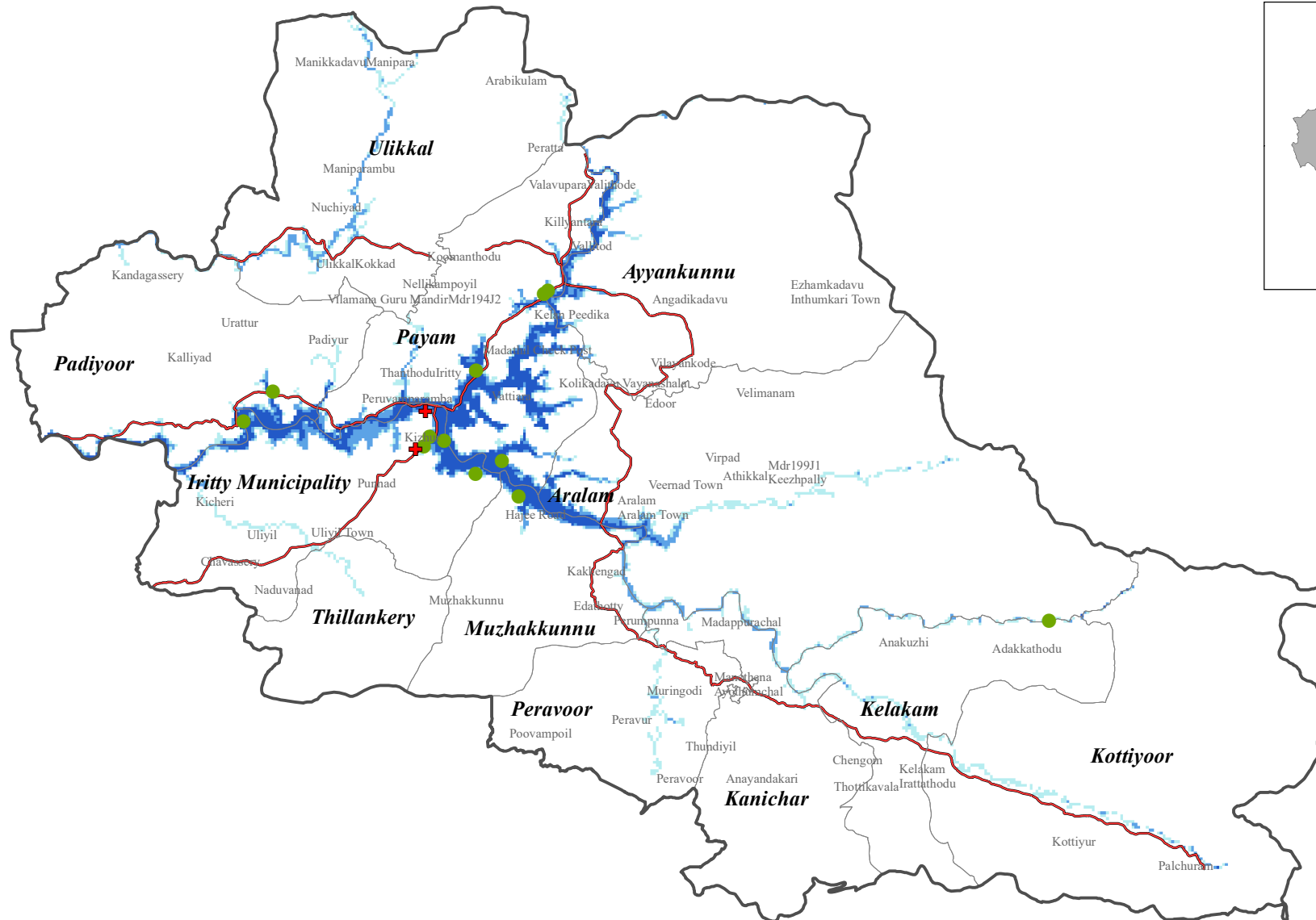
RISK LAB, KSEOC
 Kerala State Disaster Management Authority
 Thiruvananthapuram
External boundaries are not verified. Reference purpose only
 Source: KSREC, KSDMA, UNEP, UN GRID, CIMA (Italy)

IRITTI TALUK (KANNUR DISTRICT) Flood Inundation (1 in 50 Year Return Probability)

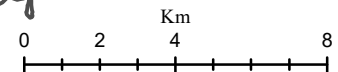


12°0'0"N

12°0'0"N

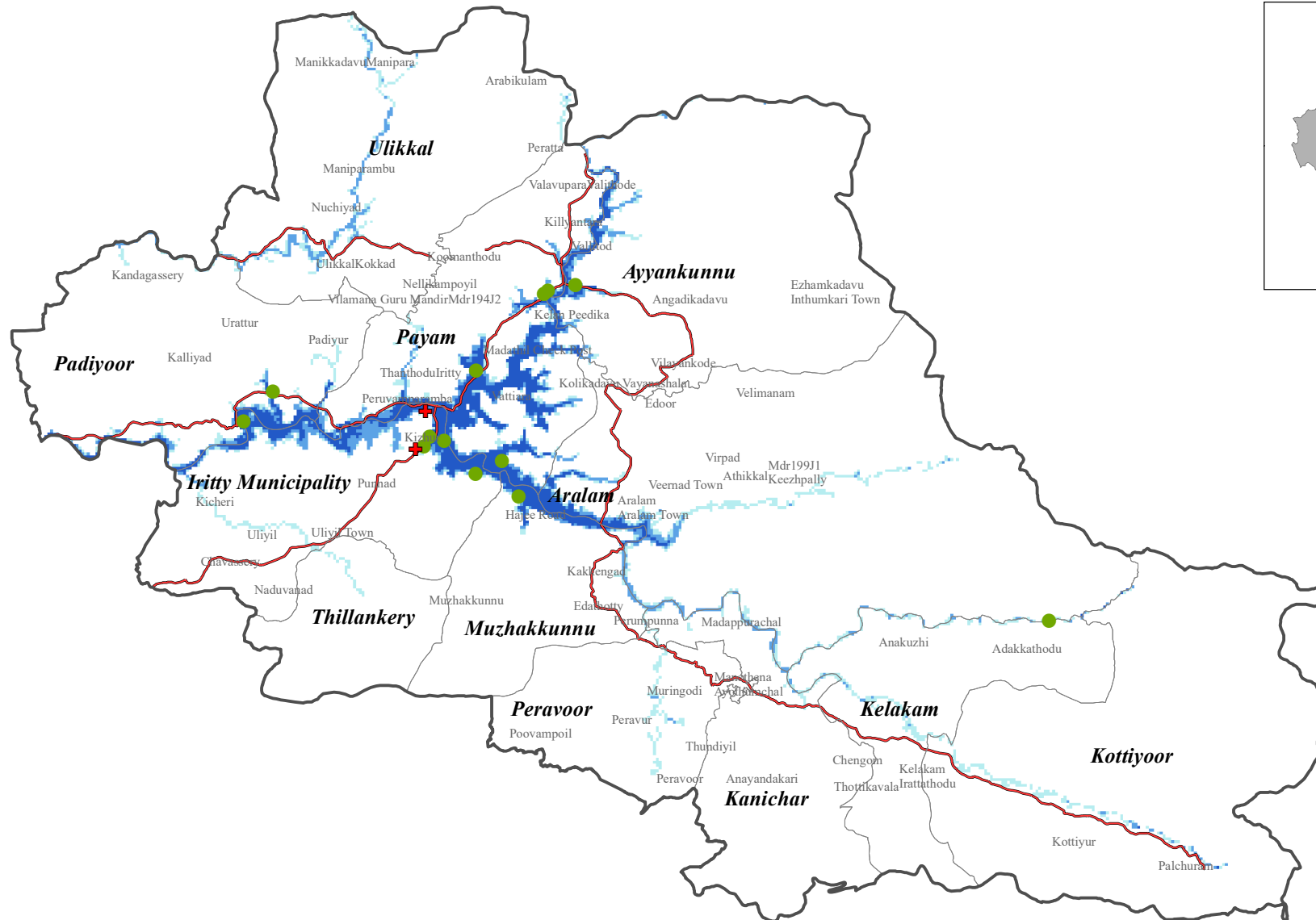
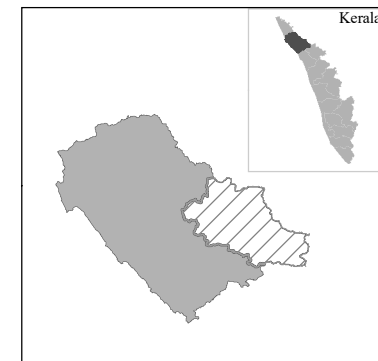


Flood Water Level (m)		Legend	
	<4		Taluk Boundary
	4-8		Local Government
	8-12		National Highway
	>12		State Highway
			Govt Schools
			Private Schools
			Hospital
			Railway

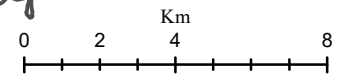


RISK LAB, KSEOC
 Kerala State Disaster Management Authority
 Thiruvananthapuram
External boundaries are not verified. Reference purpose only
 Source: KSREC, KSDMA, UNEP, UN GRID, CIMA (Italy)

IRITTI TALUK (KANNUR DISTRICT) Flood Inundation (1 in 100 Year Return Probability)



Flood Water Level (m)		Legend	
	<4		Taluk Boundary
	4-8		National Highway
	8-12		Govt Schools
	>12		Private Schools
			Local Government
			State Highway
			Railway
			Hospital

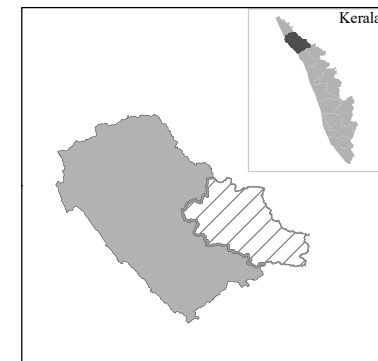


RISK LAB, KSEOC
 Kerala State Disaster Management Authority
 Thiruvananthapuram
External boundaries are not verified. Reference purpose only
 Source: KSREC, KSDMA, UNEP, UN GRID, CIMA (Italy)

75°40'0"E

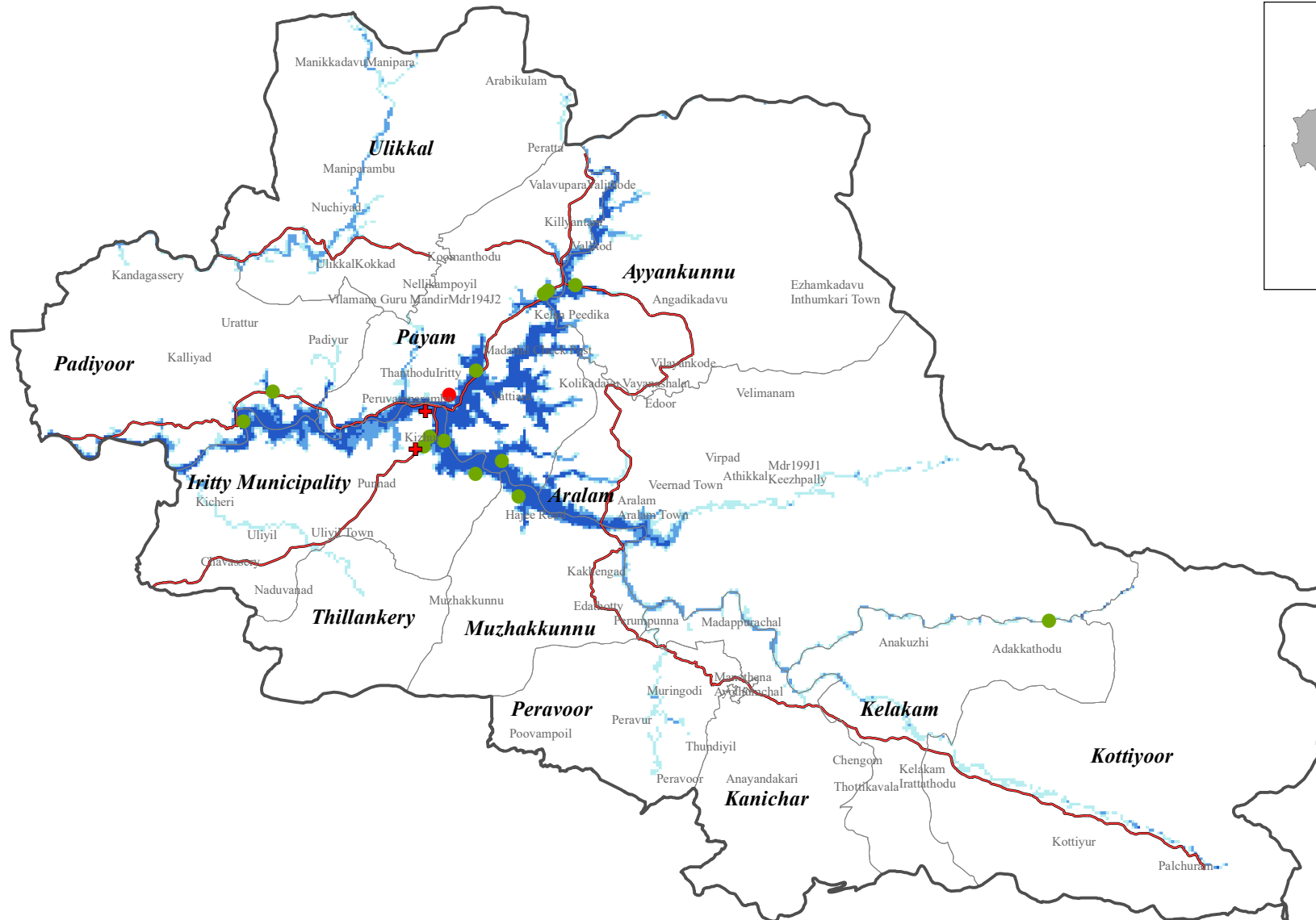
76°0'0"E

IRITTI TALUK (KANNUR DISTRICT) Flood Inundation (1 in 200 Year Return Probability)

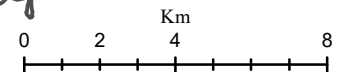


12°0'0"N

12°0'0"N



Flood Water Level (m)		Legend	
	<4		Taluk Boundary
	4-8		Local Government
	8-12		National Highway
	>12		State Highway
			Govt Schools
			Private Schools
			Hospital
			Railway



RISK LAB, KSEOC
 Kerala State Disaster Management Authority
 Thiruvananthapuram
External boundaries are not verified. Reference purpose only
 Source: KSREC, KSDMA, UNEP, UN GRID, CIMA (Italy)

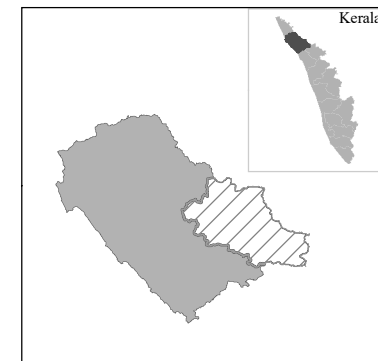
75°40'0"E

76°0'0"E

75°40'0"E

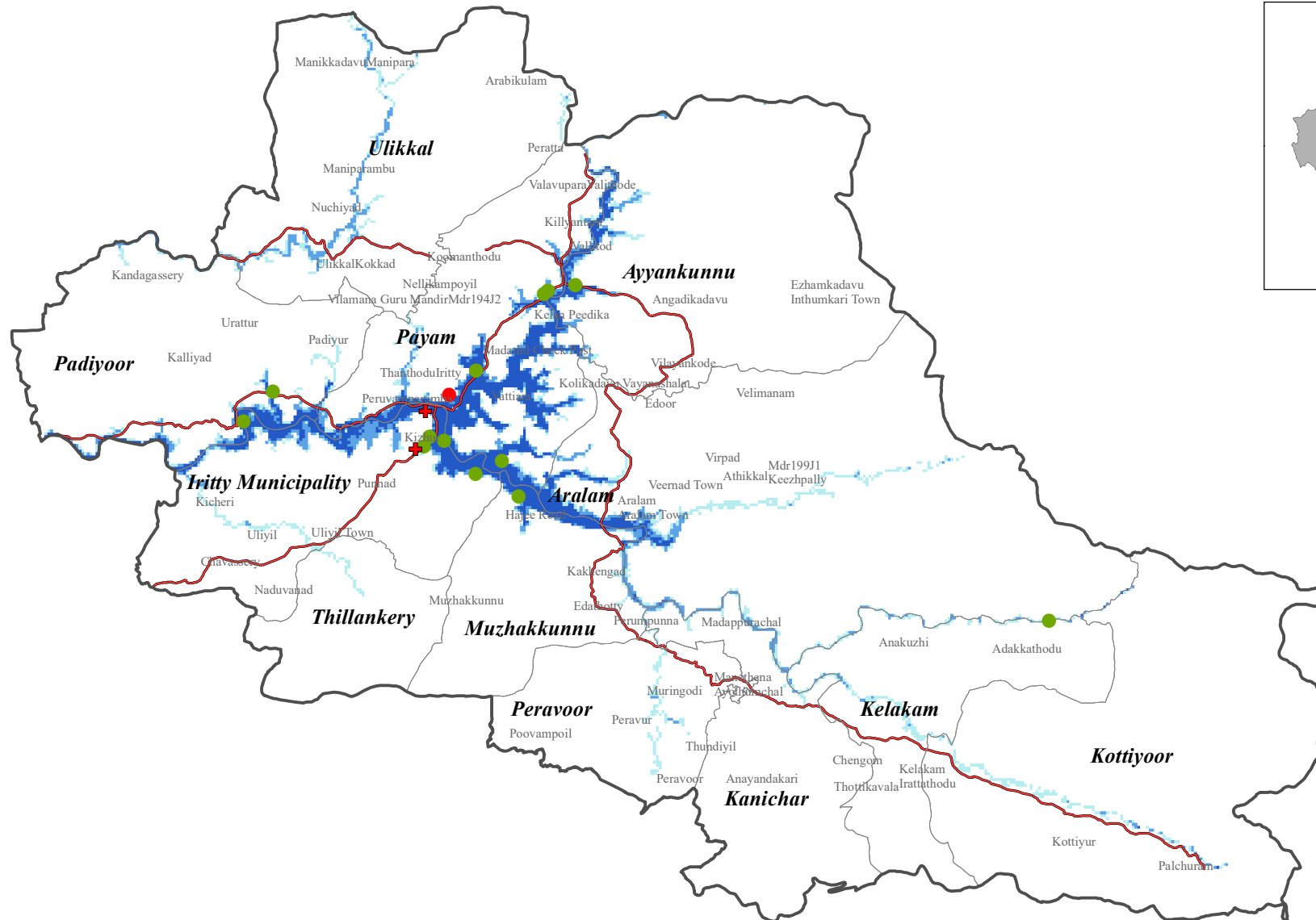
76°0'0"E

IRITTI TALUK (KANNUR DISTRICT) Flood Inundation (1 in 500 Year Return Probability)

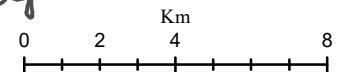


12°0'0"N

12°0'0"N



Flood Water Level (m)		Legend	
	<4		Taluk Boundary
	4-8		Local Government
	8-12		National Highway
	>12		State Highway
			Govt Schools
			Private Schools
			Hospital
			Railway



RISK LAB, KSEOC
 Kerala State Disaster Management Authority
 Thiruvananthapuram
External boundaries are not verified. Reference purpose only
 Source: KSREC, KSDMA, UNEP, UN GRID, CIMA (Italy)

75°40'0"E

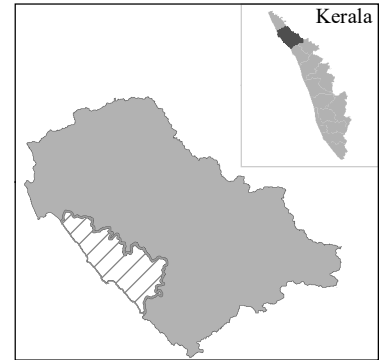
76°0'0"E

List of affected Schools/ Hospitals (LSG Wise)

KANNUR DISTRICT						
IRITTY TALUK						
Name of affected Hospital/School (LSGI)	Return Probability (Historic)					
	1 In 10 Year	1 in 25 Year	1 in 50 Year	1 in 100 Year	1 in 200 Year	1 in 500 Year
Aralam						
School						
Govt High School Aralam Farm	✓	✓	✓	✓	✓	✓
Ayyankunnu						
School						
Devaswam LPS Mundayaparamba				✓	✓	✓
Iritty Municipality						
Hospital						
Amala Hospital, Iritty		✓	✓	✓	✓	✓
Malabar Tulasi Hospital			✓	✓	✓	✓
School						
Iritty High School	✓	✓	✓	✓	✓	✓
Iritty I I M A LPS	✓	✓	✓	✓	✓	✓
Keezhur V.UPS	✓	✓	✓	✓	✓	✓
Kuyiloor L.P.School Padiyoor	✓	✓	✓	✓	✓	✓
Payanchery LPS	✓	✓	✓	✓	✓	✓
Iritty(M)						
Hospital						
Amala Hospital, Iritty	✓	✓	✓	✓	✓	✓
Muzhakkunnu						
School						
Ayyanpankavu M.LPS	✓	✓	✓	✓	✓	✓
Padiyoor						
School						
S.N.U.P School Padiyoor	✓	✓	✓	✓	✓	✓
Payam						
School						
G.L.P.S Peratta					✓	✓
GUPS Payam	✓	✓	✓	✓	✓	✓
Kunnoth St Joseph UPS	✓	✓	✓	✓	✓	✓
Madathiyil LPS	✓	✓	✓	✓	✓	✓
St.Josephs Hs Kunnoth	✓	✓	✓	✓	✓	✓

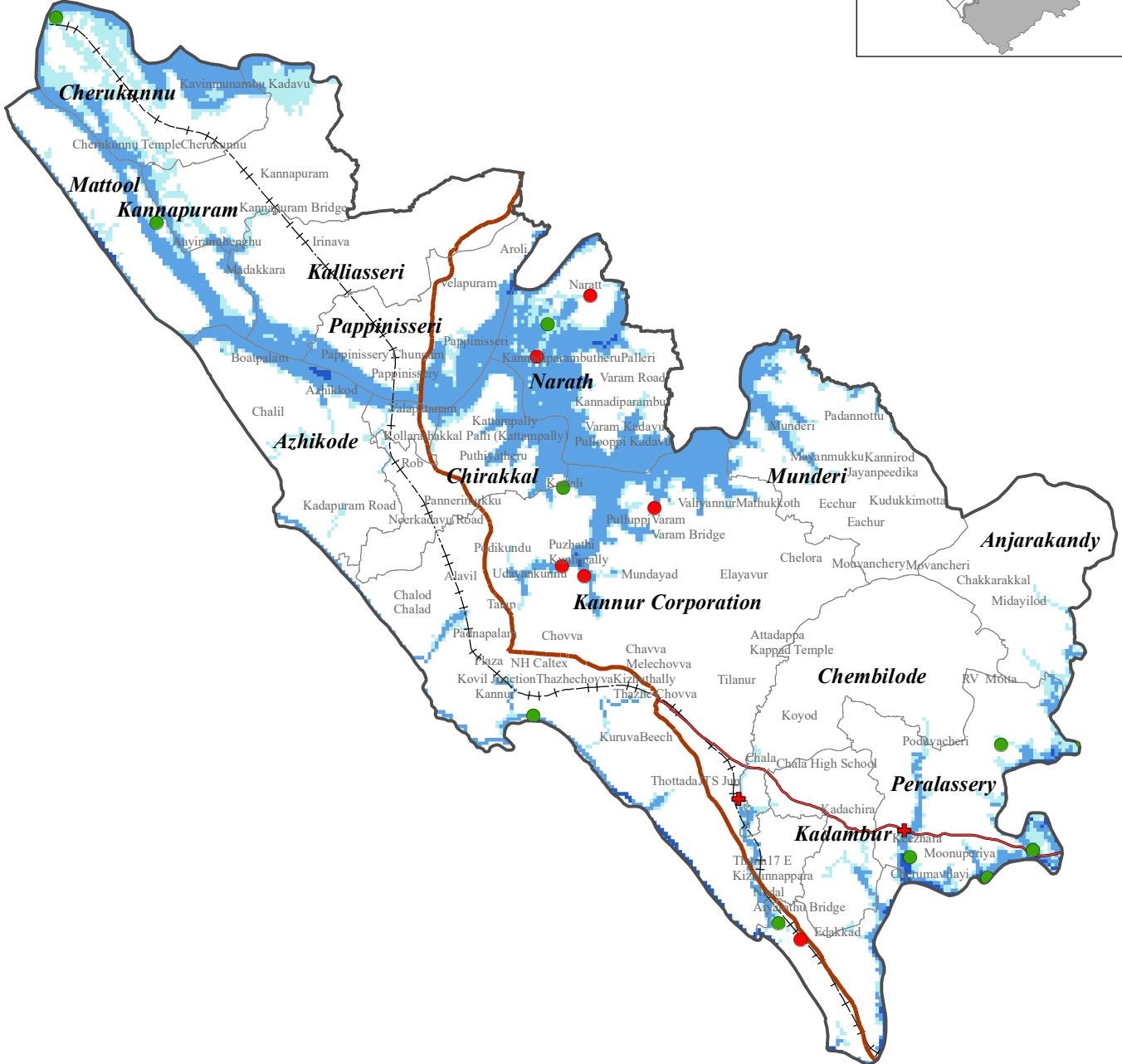
KANNUR TALUK (KANNUR DISTRICT)

Flood Inundation (1 in 10 Year Return Probability)

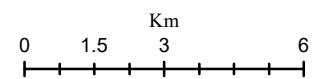


12°0'0"N

12°0'0"N



Flood Water Level (m)		Legend			
	<4		Taluk Boundary		Govt Schools
	4-8		National Highway		Private Schools
	8-12		State Highway		Hospital
	>12		Railway		
			Local Government		



RISK LAB, KSEOC
 Kerala State Disaster Management Authority
 Thiruvananthapuram

External boundaries are not verified. Reference purpose only
 Source: KSREC, KSDMA, UNEP, UN GRID, CIMA (Italy)

KANNUR TALUK (KANNUR DISTRICT) Flood Inundation (1 in 25 Year Return Probability)

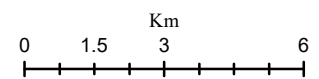


12°0'0"N

12°0'0"N

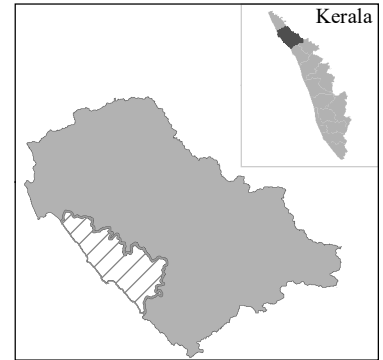


Flood Water Level (m)		Legend			
	<4		Taluk Boundary		Govt Schools
	4-8		National Highway		Private Schools
	8-12		State Highway		Hospital
	>12		Local Government		



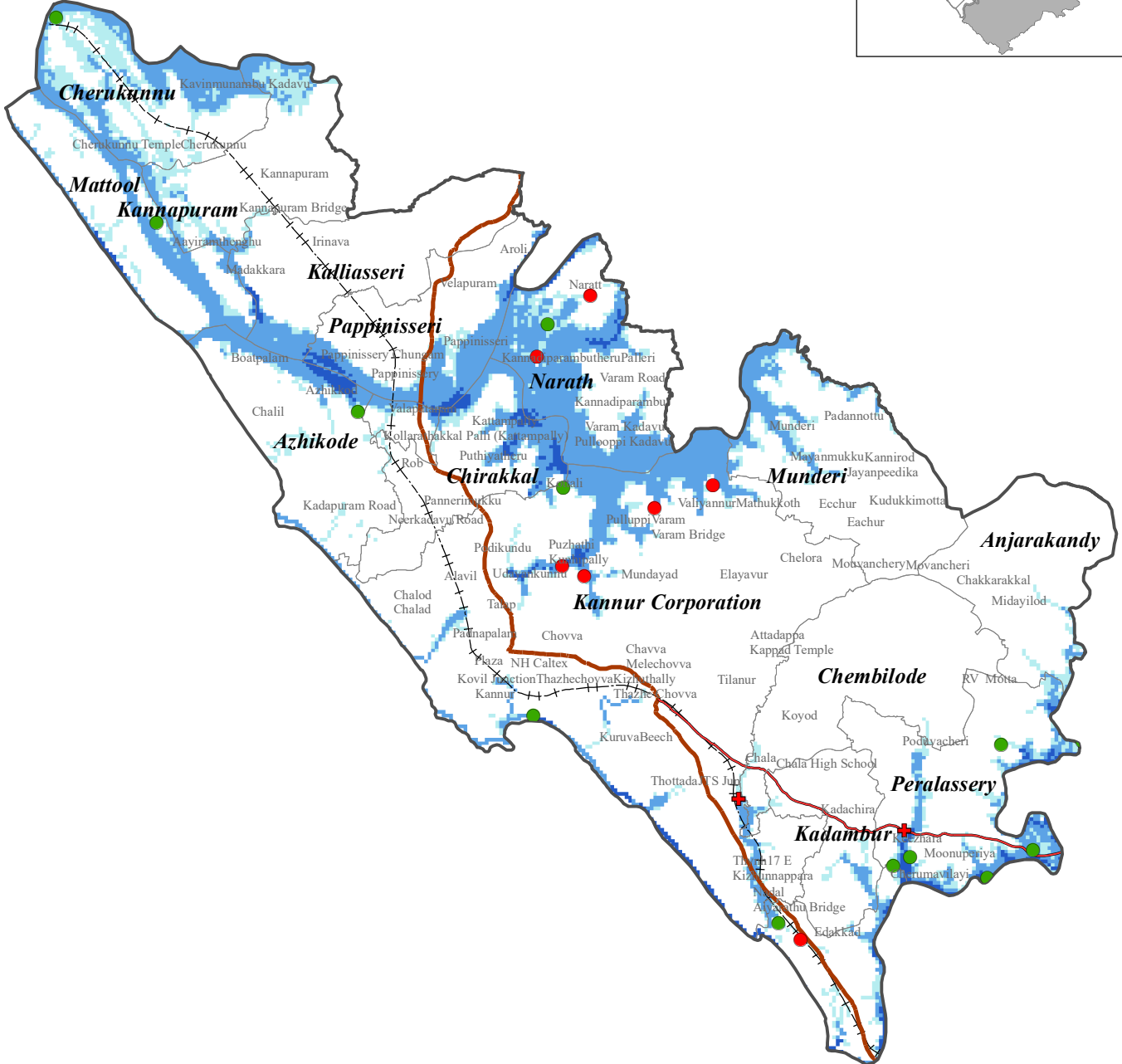
RISK LAB, KSEOC
 Kerala State Disaster Management Authority
 Thiruvananthapuram
 External boundaries are not verified. Reference purpose only
 Source: KSREC, KSDMA, UNEP, UN GRID, CIMA (Italy)

KANNUR TALUK (KANNUR DISTRICT) Flood Inundation (1 in 50 Year Return Probability)

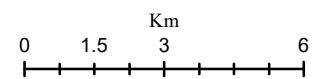


12°0'0"N

12°0'0"N

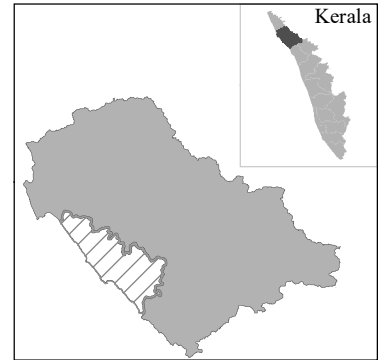


Flood Water Level (m)		Legend			
	<4		Taluk Boundary		Govt Schools
	4-8		National Highway		Private Schools
	8-12		State Highway		Hospital
	>12		Railway		
			Local Government		



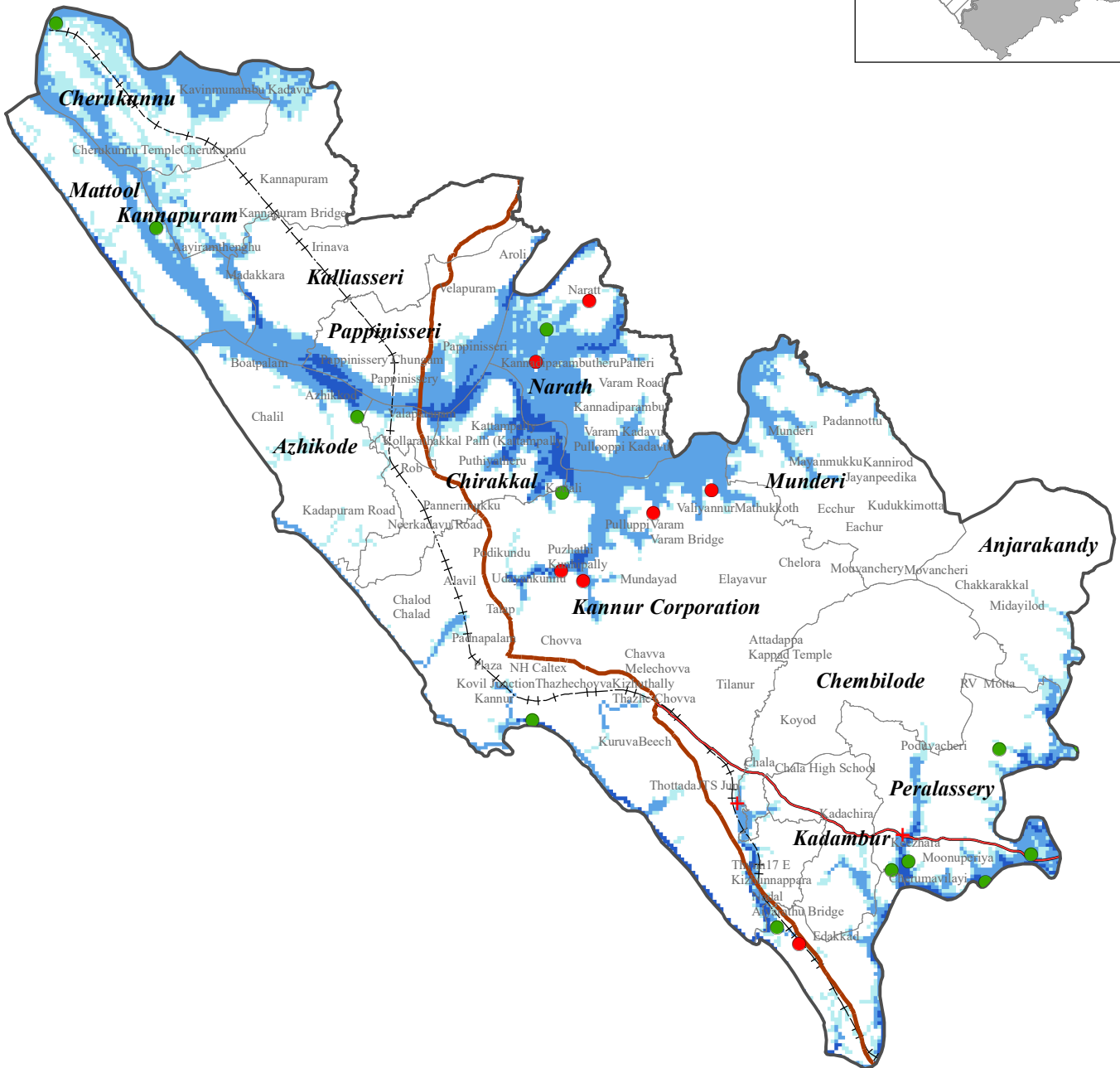
RISK LAB, KSEOC
 Kerala State Disaster Management Authority
 Thiruvananthapuram
External boundaries are not verified. Reference purpose only
 Source: KSREC, KSDMA, UNEP, UN GRID, CIMA (Italy)

KANNUR TALUK (KANNUR DISTRICT) Flood Inundation (1 in 100 Year Return Probability)

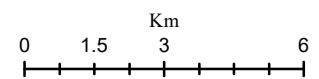


12°0'0"N

12°0'0"N

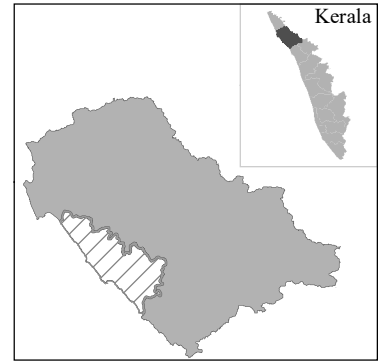


Flood Water Level (m)		Legend			
	<4		Taluk Boundary		Govt Schools
	4-8		National Highway		Private Schools
	8-12		State Highway		Hospital
	>12		Local Government		Railway



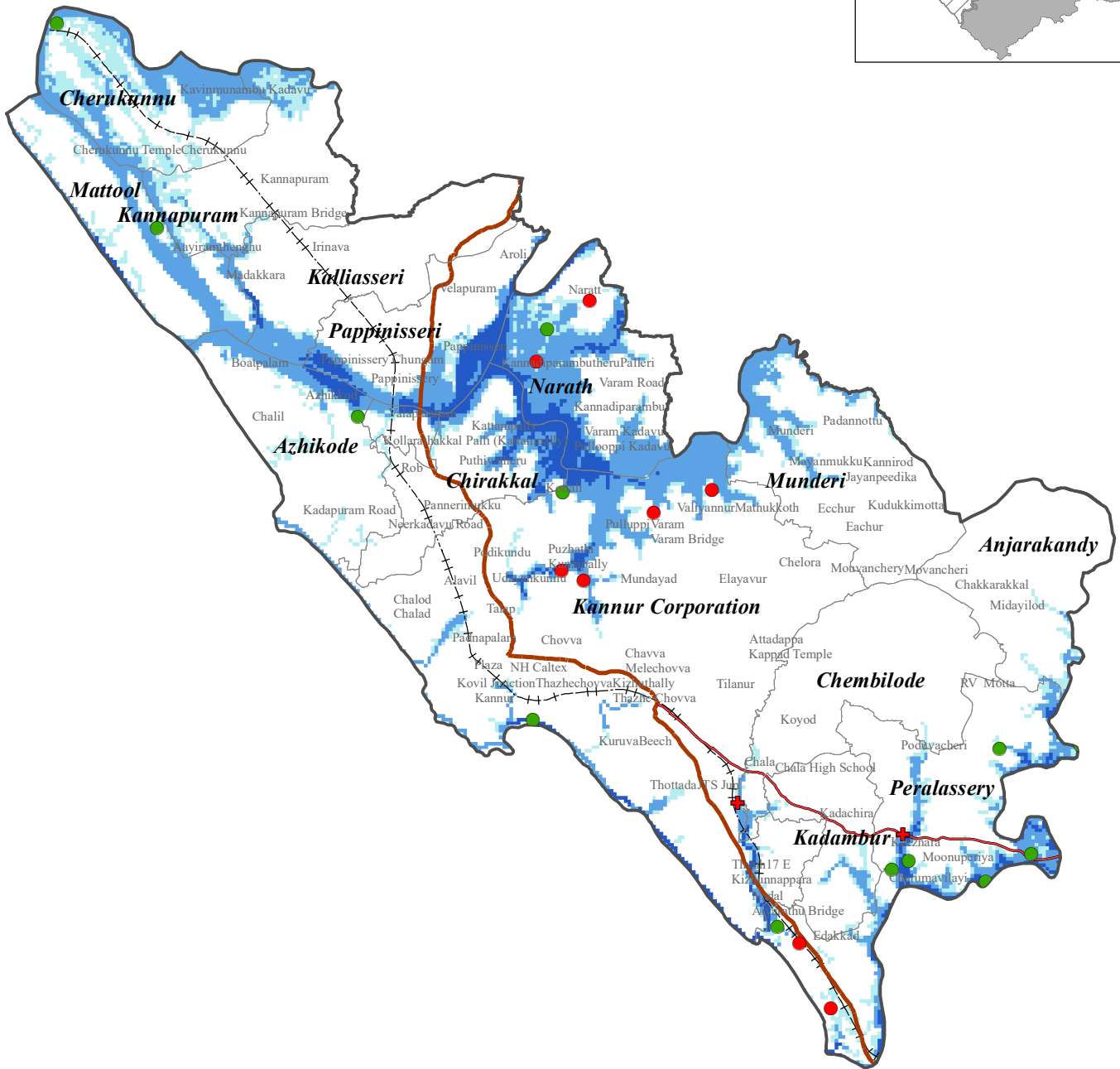
RISK LAB, KSEOC
 Kerala State Disaster Management Authority
 Thiruvananthapuram
 External boundaries are not verified. Reference purpose only
 Source: KSREC, KSDMA, UNEP, UN GRID, CIMA (Italy)

KANNUR TALUK (KANNUR DISTRICT) Flood Inundation (1 in 200 Year Return Probability)



12°0'0"N

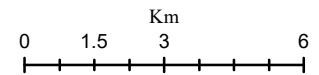
12°0'0"N



Flood Water Level (m)



Legend

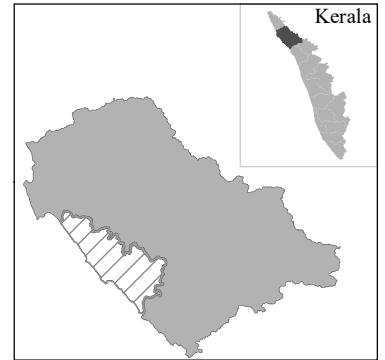


RISK LAB, KSEOC
Kerala State Disaster Management Authority
Thiruvananthapuram
External boundaries are not verified. Reference purpose only
Source: KSREC, KSDMA, UNEP, UN GRID, CIMA (Italy)

75°20'0"E

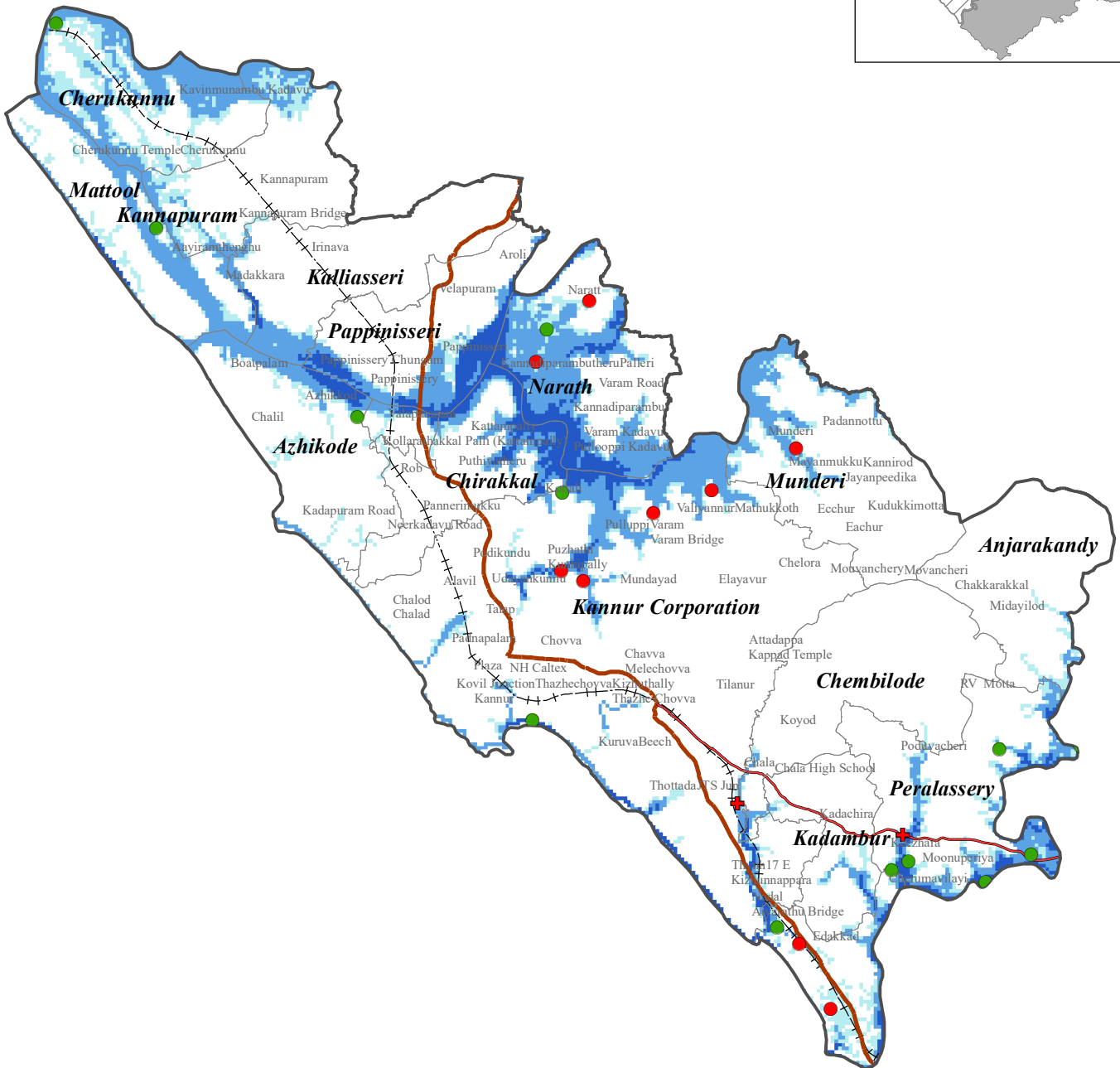
KANNUR TALUK (KANNUR DISTRICT) Flood Inundation (1 in 500 Year Return Probability)

N



12°0'0"N

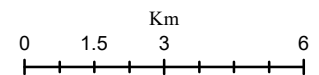
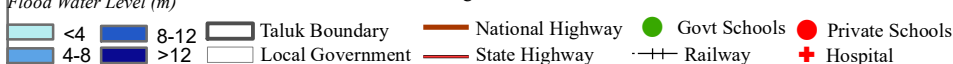
12°0'0"N



Flood Water Level (m)



Legend



RISK LAB, KSEOC
Kerala State Disaster Management Authority
Thiruvananthapuram

External boundaries are not verified. Reference purpose only
Source: KSREC, KSDMA, UNEP, UN GRID, CIMA (Italy)

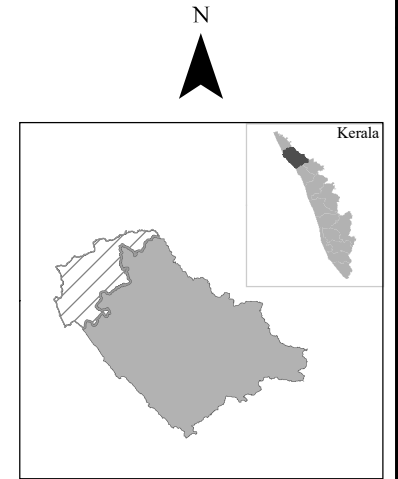
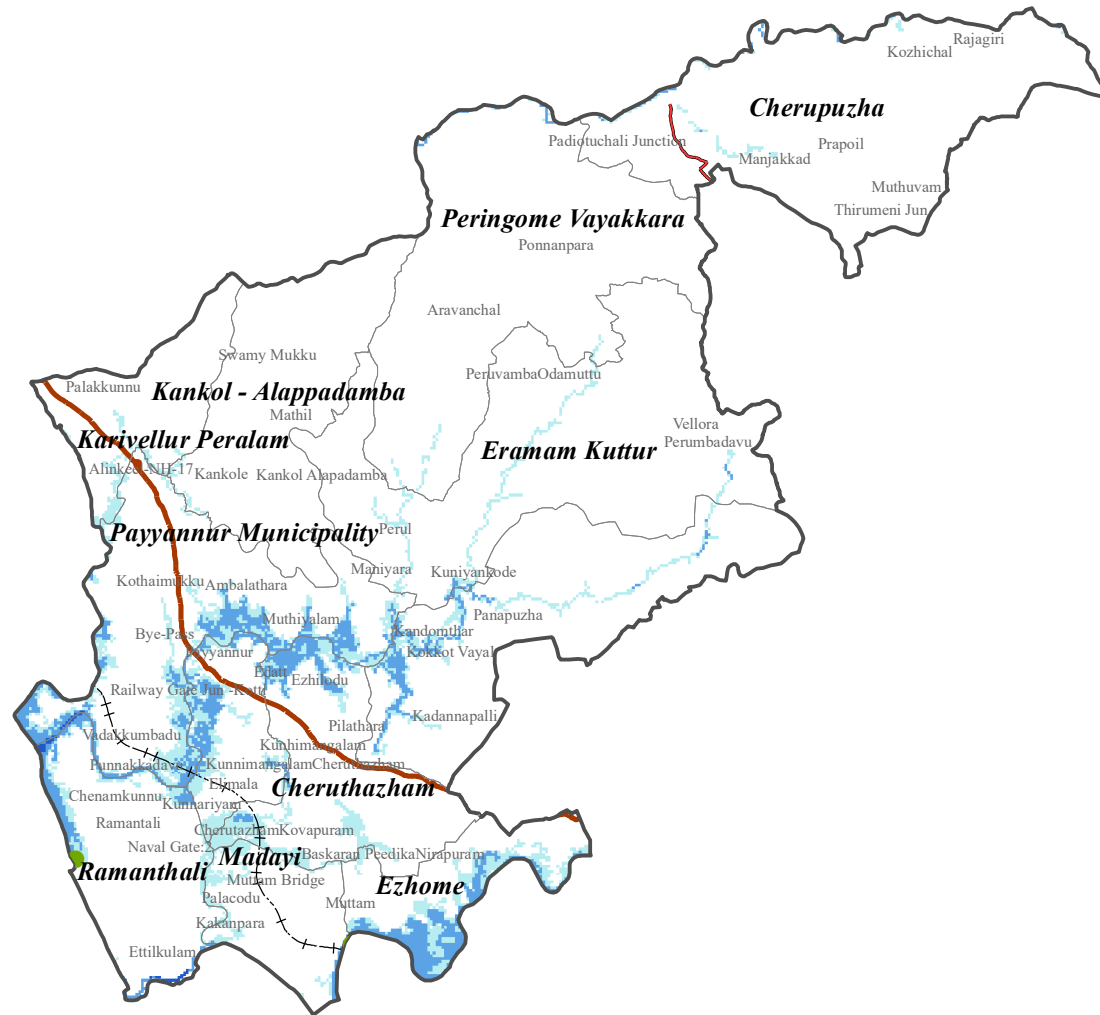
75°20'0"E

List of affected Schools/ Hospitals (LSG Wise)

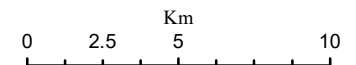
KANNUR DISTRICT						
KANNUR TALUK						
Name of affected Hospital/School (LSGI)	Return Probability (Historic)					
	1 In 10 Year	1 in 25 Year	1 in 50 Year	1 in 100 Year	1 in 200 Year	1 in 500 Year
Azhikode						
School						
Hidayathul Islam MLPS Azhikode		✓	✓	✓	✓	✓
Cherukunnu						
School						
Technical Hs Naduvil	✓	✓	✓	✓	✓	✓
Edakkad						
Hospital						
AKG Hospital	✓	✓	✓	✓	✓	✓
Kannur Corporation						
Hospital						
Gym Care Kannur		✓	✓	✓	✓	✓
School						
Athazhakkunnu MLPS Kottali	✓	✓	✓	✓	✓	✓
Elayavoor U.P.S	✓	✓	✓	✓	✓	✓
G.U.P.S Puzhathi	✓	✓	✓	✓	✓	✓
Govt.City H.S.S.Kannur	✓	✓	✓	✓	✓	✓
Krishnavilasam U.P.S Kappad			✓	✓	✓	✓
Kannur(C)						
Hospital						
Gym Care Kannur	✓	✓	✓	✓	✓	✓
Mattool						
School						
LfUPS Mattul	✓	✓	✓	✓	✓	✓
Munderi						
School						
G.H.S S Munderi						✓
Muzhappilangad						
School						
G.L.P.S Muzhappilangad					✓	✓
Kadambure North U.P.S	✓	✓	✓	✓	✓	✓
Maunathul Islam L P S	✓	✓	✓	✓	✓	✓
Narath						
School						
G.W.L.P.S Cheruvakara	✓	✓	✓	✓	✓	✓
GwLPS Cheruvakkara	✓	✓	✓	✓	✓	✓
Peralassery						
Hospital						
AKG Hospital		✓	✓	✓	✓	✓
School						
Kottam East LPS	✓	✓	✓	✓	✓	✓
Makreri L P S	✓	✓	✓	✓	✓	✓
Mundallore New L P S	✓	✓	✓	✓	✓	✓
Mundallore West LPS	✓	✓	✓	✓	✓	✓
Udungot Achuthavilasam L P S		✓	✓	✓	✓	✓

PAYYANUR TALUK (KANNUR DISTRICT)

Flood Inundation (1 in 10 Year Return Probability)



Flood Water Level (m)		Legend	
	<4		Taluk Boundary
	4-8		Local Government
	8-12		National Highway
	>12		Govt Schools
			Private Schools
			Hospital
			State Highway
			Railway



RISK LAB, KSEOC
 Kerala State Disaster Management Authority
 Thiruvananthapuram
External boundaries are not verified. Reference purpose only
 Source: KSREC, KSDMA, UNEP, UN GRID, CIMA (Italy)

75°20'0"E

12°20'0"N

12°0'0"N

12°20'0"N

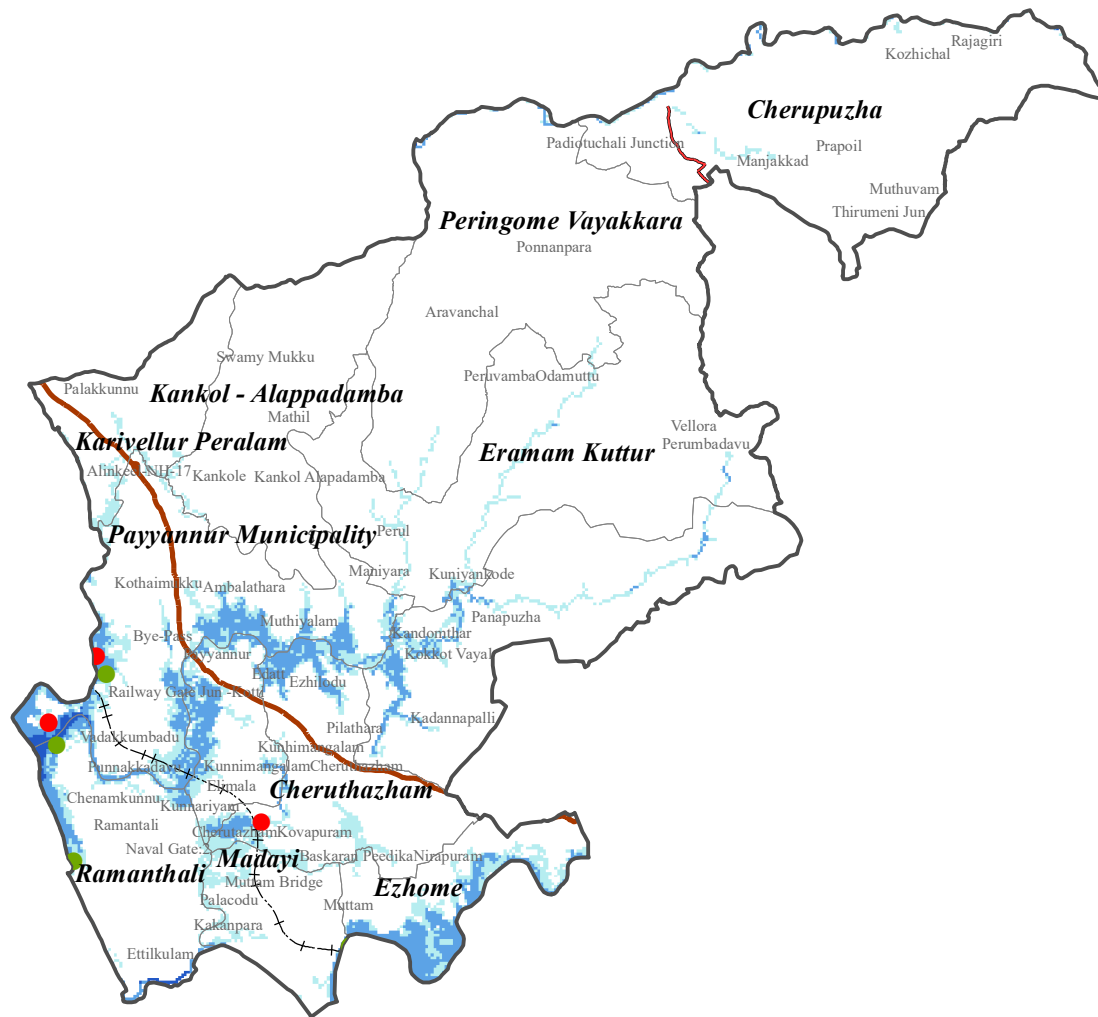
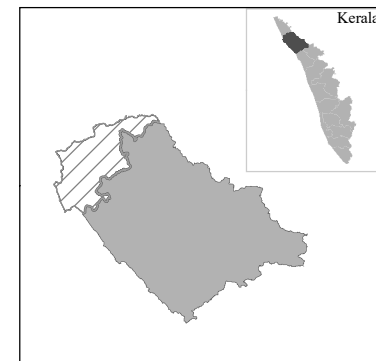
12°0'0"N

75°20'0"E

12°20'0"N

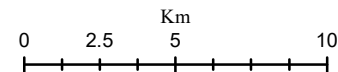
12°20'0"N

PAYYANUR TALUK (KANNUR DISTRICT) Flood Inundation (1 in 25 Year Return Probability)



12°0'0"N

12°0'0"N



Flood Water Level (m)		Legend	
	<4		Taluk Boundary
	4-8		Local Government
	8-12		National Highway
	>12		State Highway
	Govt Schools		Private Schools
	Hospital		Railway

RISK LAB, KSEOC
 Kerala State Disaster Management Authority
 Thiruvananthapuram
External boundaries are not verified. Reference purpose only
 Source: KSREC, KSDMA, UNEF, UN GRID, CIMA (Italy)

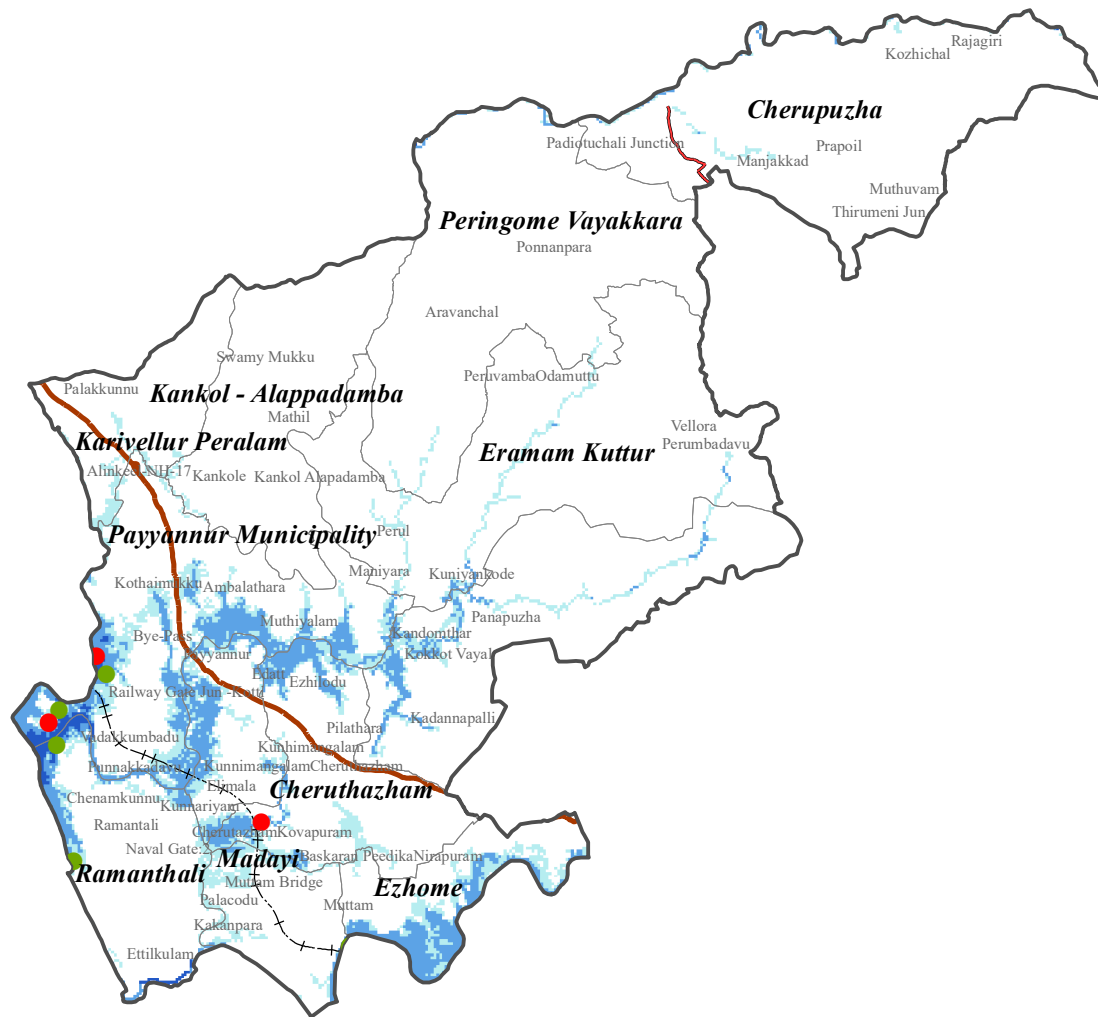
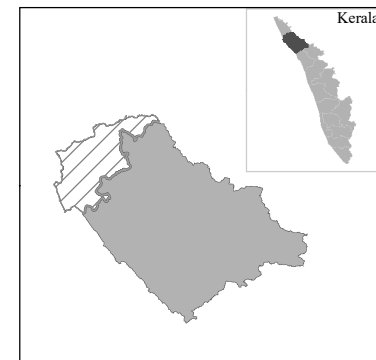
75°20'0"E

75°20'0"E

12°20'0"N

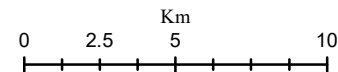
12°20'0"N

PAYYANUR TALUK (KANNUR DISTRICT) Flood Inundation (1 in 50 Year Return Probability)



12°0'0"N

12°0'0"N



Flood Water Level (m)		Legend	
	<4		Taluk Boundary
	4-8		Local Government
	8-12		National Highway
	>12		State Highway
			Govt Schools
			Private Schools
			Hospital
			Railway

RISK LAB, KSEOC
 Kerala State Disaster Management Authority
 Thiruvananthapuram
External boundaries are not verified. Reference purpose only
 Source: KSREC, KSDMA, UNEP, UN GRID, CIMA (Italy)

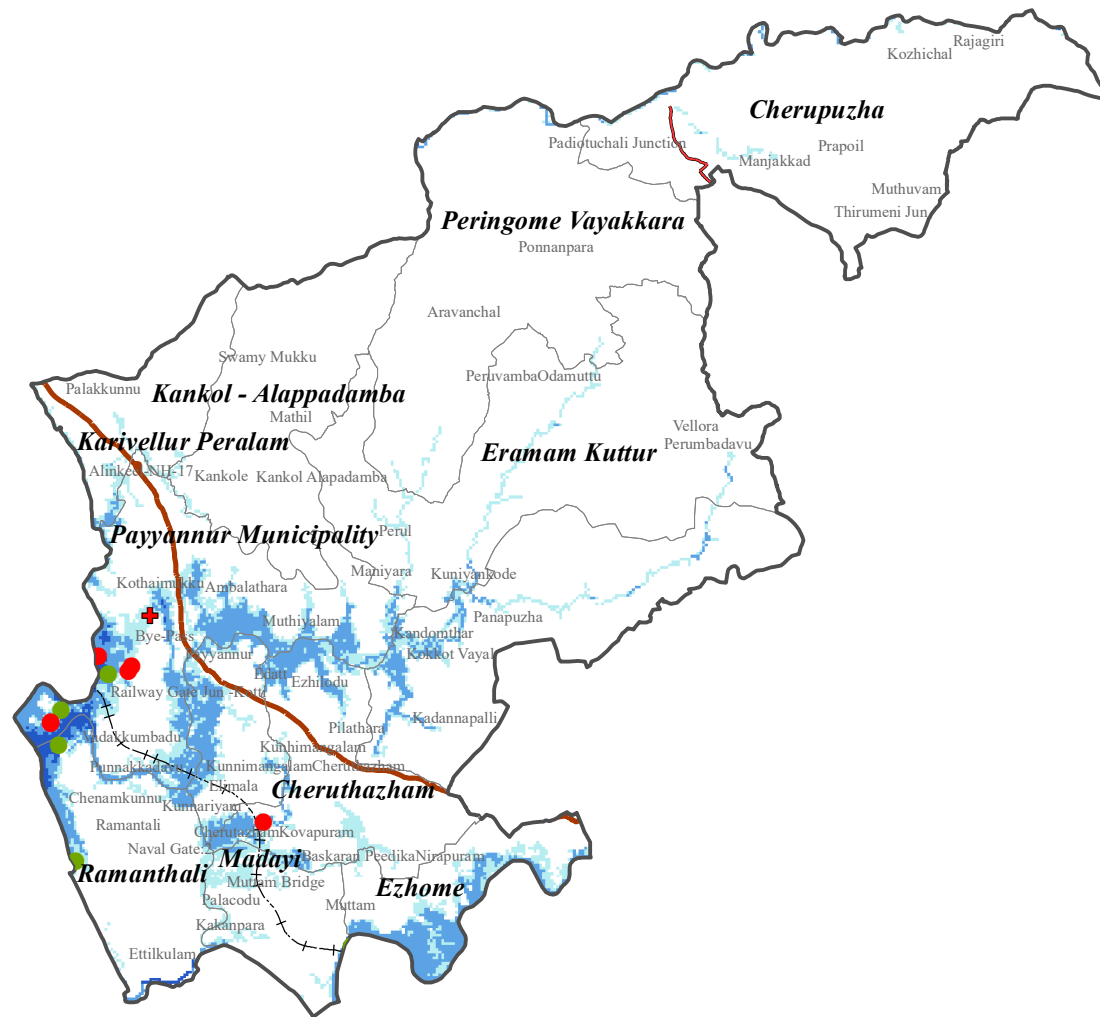
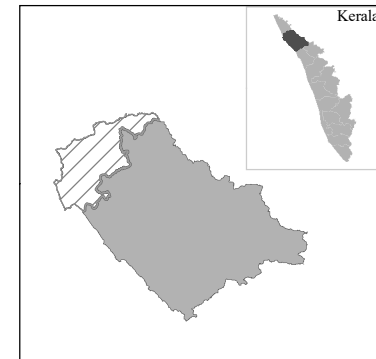
75°20'0"E

75°20'0"E

12°20'0"N

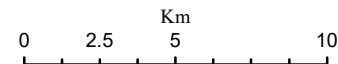
12°20'0"N

PAYYANUR TALUK (KANNUR DISTRICT) Flood Inundation (1 in 100 Year Return Probability)



12°0'0"N

12°0'0"N



Flood Water Level (m)		Legend	
	<4		Taluk Boundary
	4-8		Local Government
	8-12		National Highway
	>12		State Highway
	Govt Schools		Hospital
	Private Schools		Railway

RISK LAB, KSEOC
 Kerala State Disaster Management Authority
 Thiruvananthapuram
External boundaries are not verified. Reference purpose only
 Source: KSREC, KSDMA, UNEF, UN GRID, CIMA (Italy)

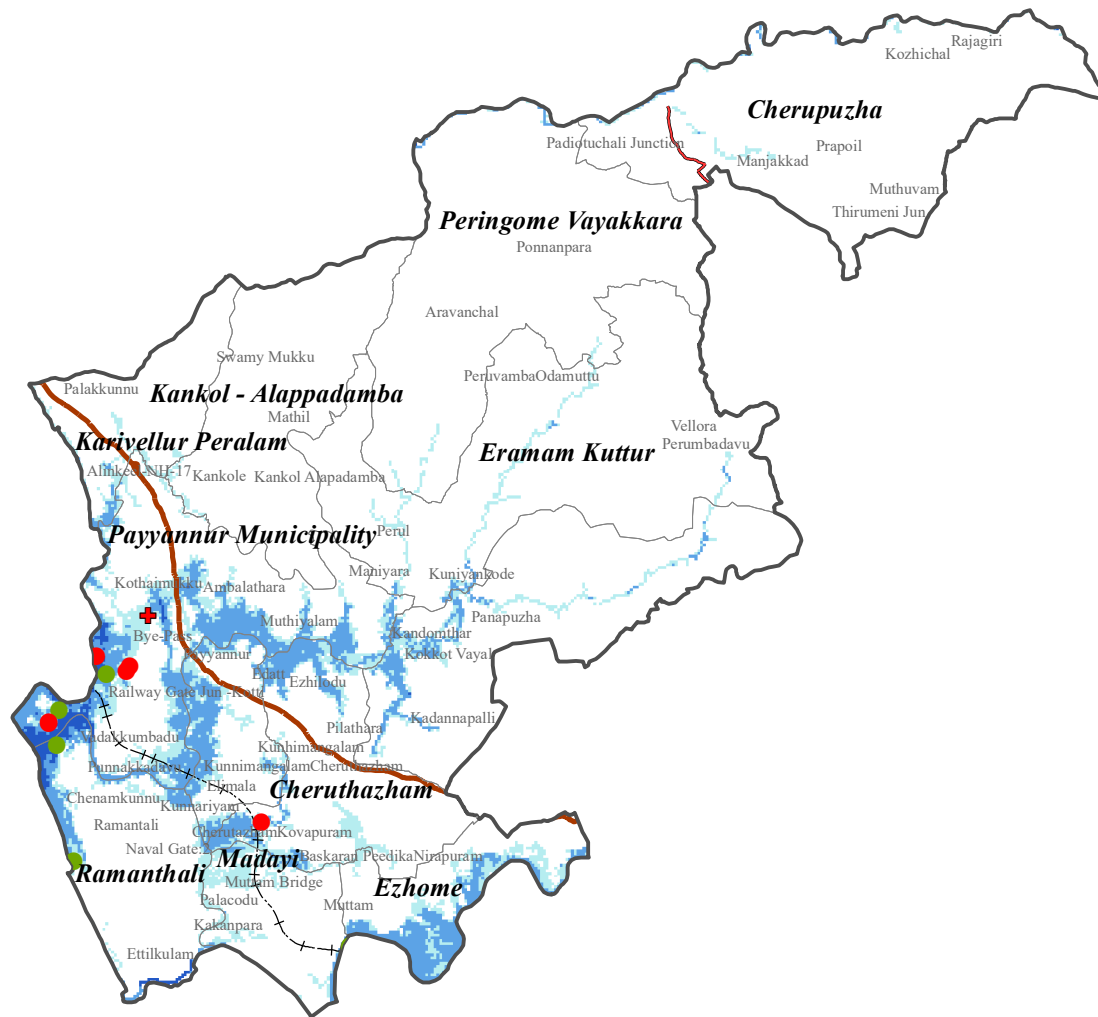
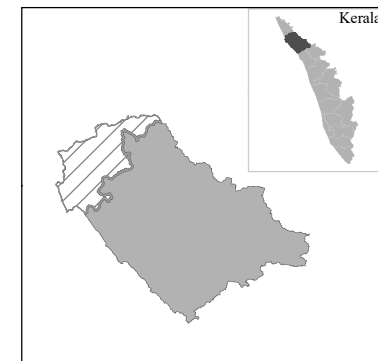
75°20'0"E

75°20'0"E

12°20'0"N

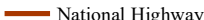


12°20'0"N

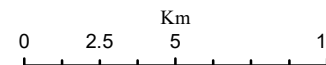
PAYYANUR TALUK (KANNUR DISTRICT) Flood Inundation (1 in 200 Year Return Probability)



Flood Water Level (m)

Legend

- | | | | | | |
|--|--|--|--|--|---|
|  <4 |  8-12 |  Taluk Boundary |  National Highway |  Govt Schools |  Private Schools |
|  4-8 |  >12 |  Local Government |  State Highway |  Hospital |  Railway |



RISK LAB, KSEOC
Kerala State Disaster Management Authority
Thiruvananthapuram

*External boundaries are not verified. Reference purpose only
Source: KSREC, KSDMA, UNEP, UN GRID, CIMA (Italy)*

75°20'0"E

12°0'0"N

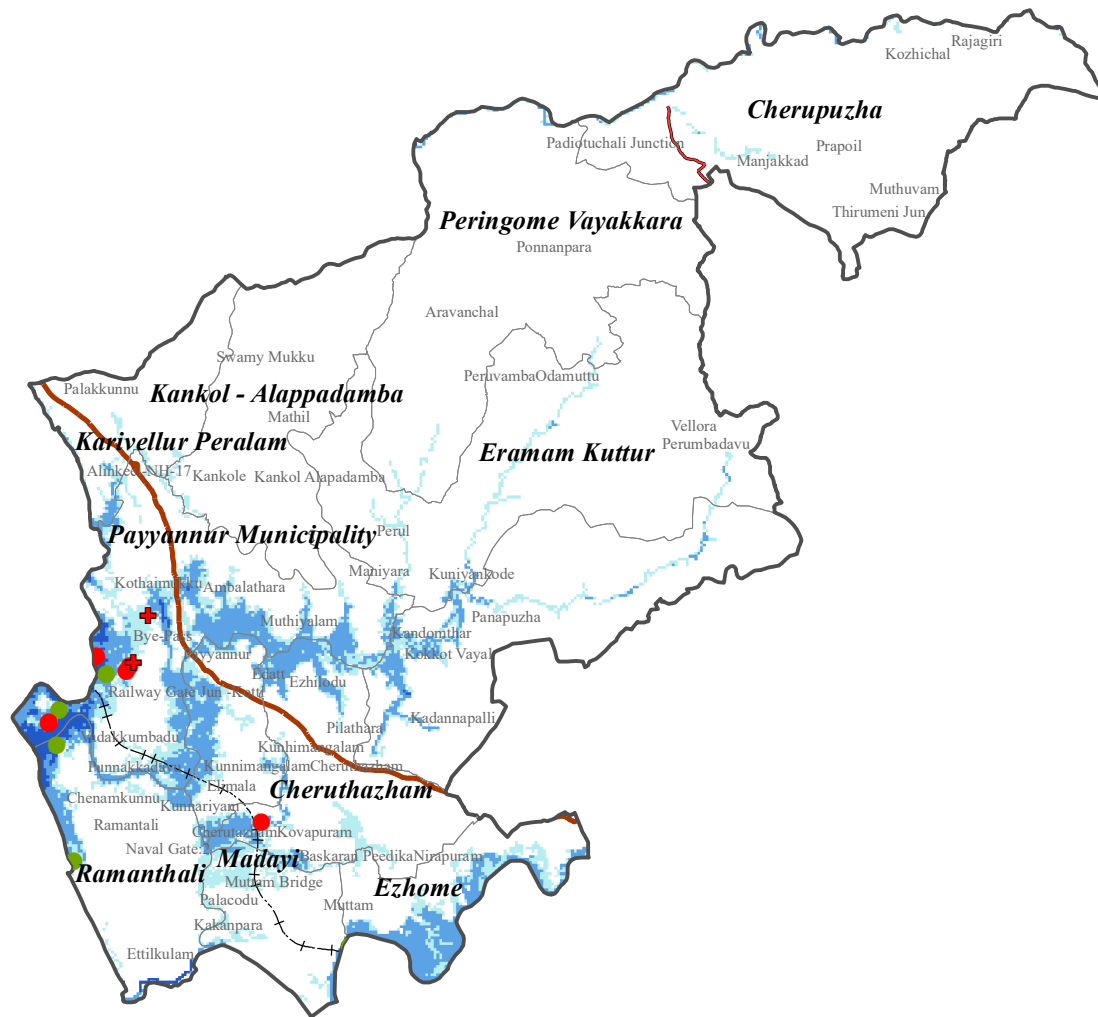
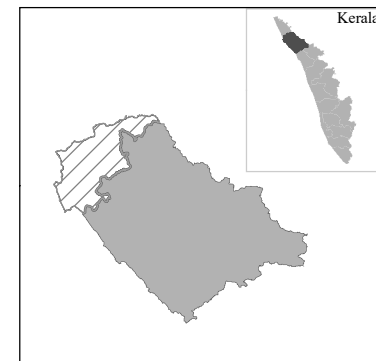
12°0'0"N

75°20'0"E

12°20'0"N

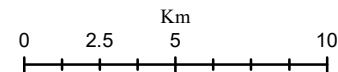
12°20'0"N

PAYYANUR TALUK (KANNUR DISTRICT) Flood Inundation (1 in 500 Year Return Probability)



12°0'0"N

12°0'0"N



Flood Water Level (m)		Legend	
	<4		Taluk Boundary
	4-8		Local Government
	8-12		National Highway
	>12		State Highway
	Govt Schools		Private Schools
	Hospital		Railway

RISK LAB, KSEOC
 Kerala State Disaster Management Authority
 Thiruvananthapuram
External boundaries are not verified. Reference purpose only
 Source: KSREC, KSDMA, UNEP, UN GRID, CIMA (Italy)

75°20'0"E

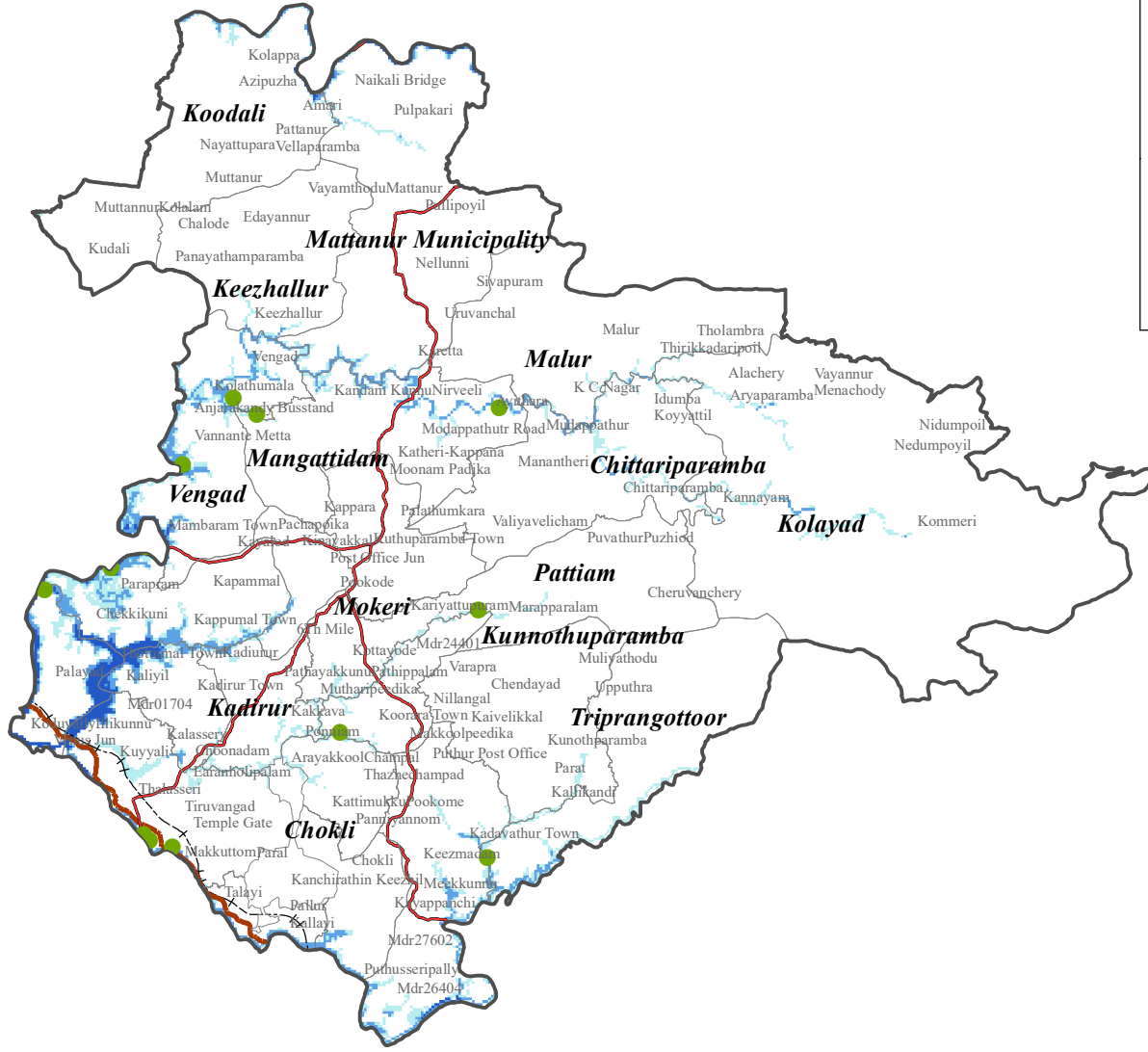
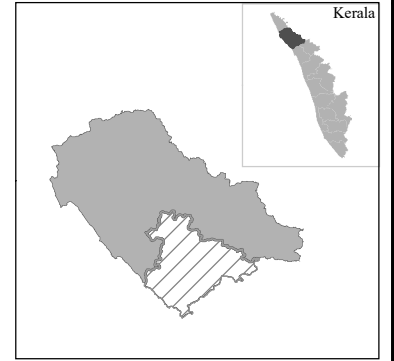
List of affected Schools/ Hospitals (LSG Wise)

KANNUR DISTRICT						
PAYYANNUR TALUK						
Name of affected Hospital/School (LSGI)	Return Probability (Historic)					
	1 In 10 Year	1 in 25 Year	1 in 50 Year	1 in 100 Year	1 in 200 Year	1 in 500 Year
Cheruthazham						
School						
Vdnmg.W.L.P.S Ezhilode		✓	✓	✓	✓	✓
Payyannur Municipality						
Hospital						
Anaamaya Medical Institute				✓	✓	✓
BKM Hospital						✓
School						
G.L.P.S Vellur		✓	✓	✓	✓	✓
GmUPS Kavvayi			✓	✓	✓	✓
Payyannur Centrel U P S		✓	✓	✓	✓	✓
Ramanthali						
School						
G. L. P. S. Thayil South Kadappuram	✓	✓	✓	✓	✓	✓
Govt.Higher Secondary School Ettikulam		✓	✓	✓	✓	✓

75°20'0"E

75°40'0"E

THALASSERY TALUK (KANNUR DISTRICT) Flood Inundation (1 in 10 Year Return Probability)



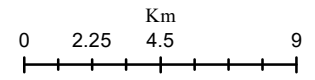
12°0'0"N

12°0'0"N

11°40'0"N

11°40'0"N

Flood Water Level (m)		Legend	
	<4		Taluk Boundary
	4-8		National Highway
	8-12		Govt Schools
	>12		Private Schools
			Local Government
			Hospital
			Railway



RISK LAB, KSEOC
 Kerala State Disaster Management Authority
 Thiruvananthapuram
External boundaries are not verified. Reference purpose only
 Source: KSREC, KSDMA, UNEP, UN GRID, CIMA (Italy)

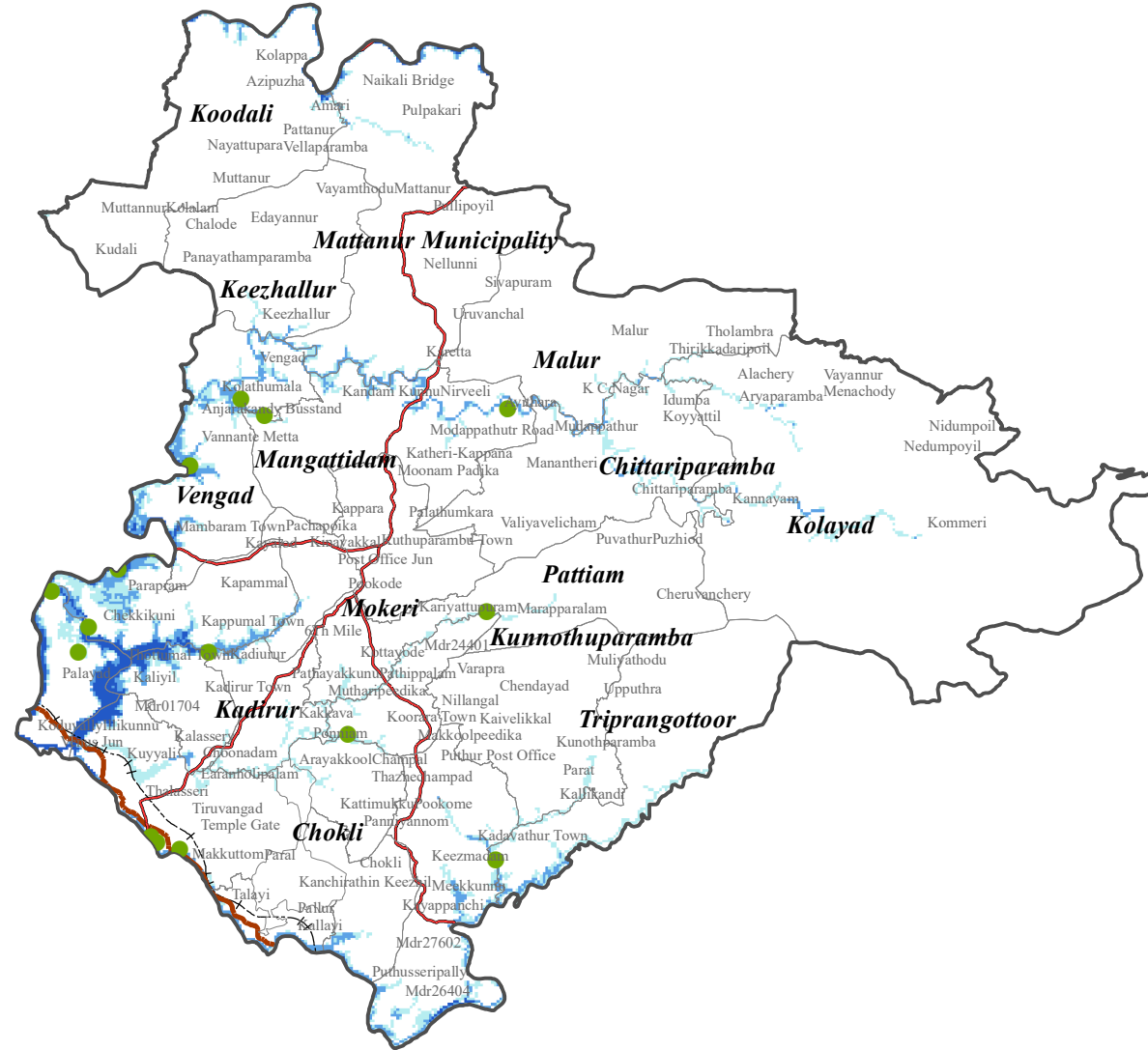
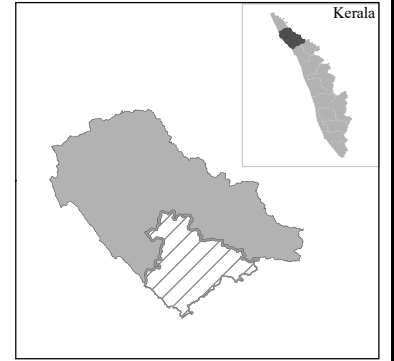
75°20'0"E

75°40'0"E

75°20'0"E

75°40'0"E

THALASSERY TALUK (KANNUR DISTRICT) Flood Inundation (1 in 25 Year Return Probability)



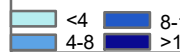
12°0'0"N

12°0'0"N

11°40'0"N

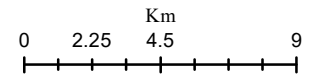
11°40'0"N

Flood Water Level (m)



Legend

- Taluk Boundary
- National Highway
- Govt Schools
- Private Schools
- State Highway
- Railway
- Hospital
- Local Government



RISK LAB, KSEOC
Kerala State Disaster Management Authority
Thiruvananthapuram

External boundaries are not verified. Reference purpose only
Source: KSREC, KSDMA, UNEP, UN GRID, CIMA (Italy)

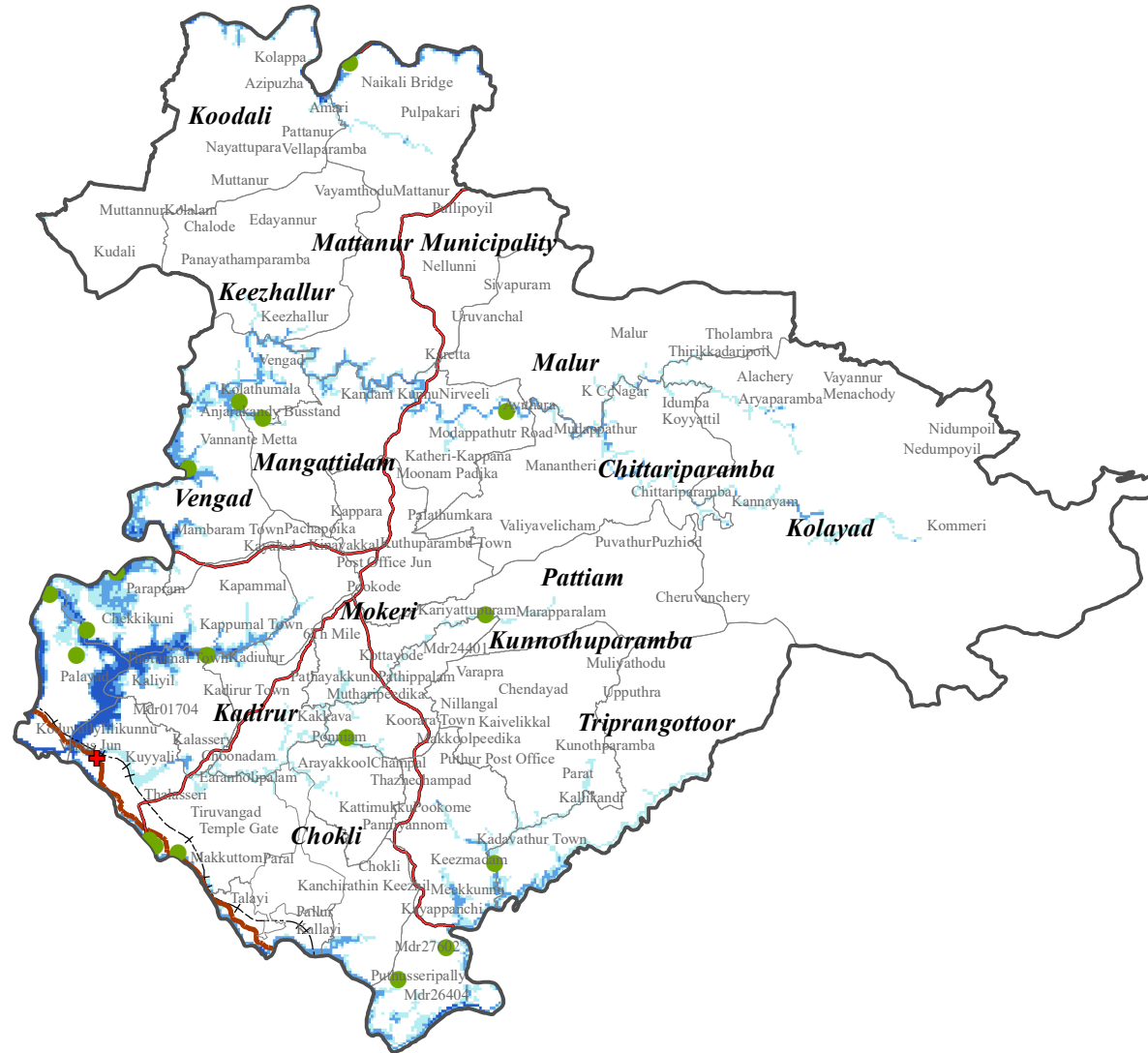
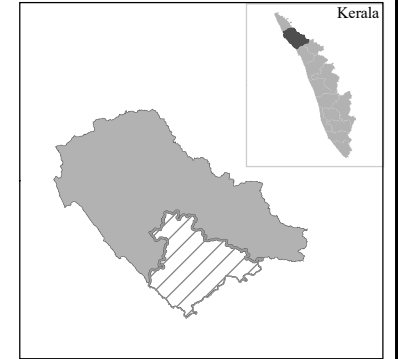
75°20'0"E

75°40'0"E

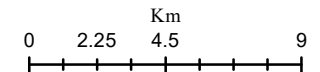
75°20'0"E

75°40'0"E

THALASSERY TALUK (KANNUR DISTRICT) Flood Inundation (1 in 50 Year Return Probability)



Flood Water Level (m)		Legend	
	<4		Taluk Boundary
	4-8		Local Government
	8-12		National Highway
	>12		State Highway
	Govt Schools		Private Schools
	Hospital		Railway



RISK LAB, KSEOC
 Kerala State Disaster Management Authority
 Thiruvananthapuram
External boundaries are not verified. Reference purpose only
 Source: KSREC, KSDMA, UNEF, UN GRID, CIMA (Italy)

75°20'0"E

75°40'0"E

12°0'0"N

12°0'0"N

11°40'0"N

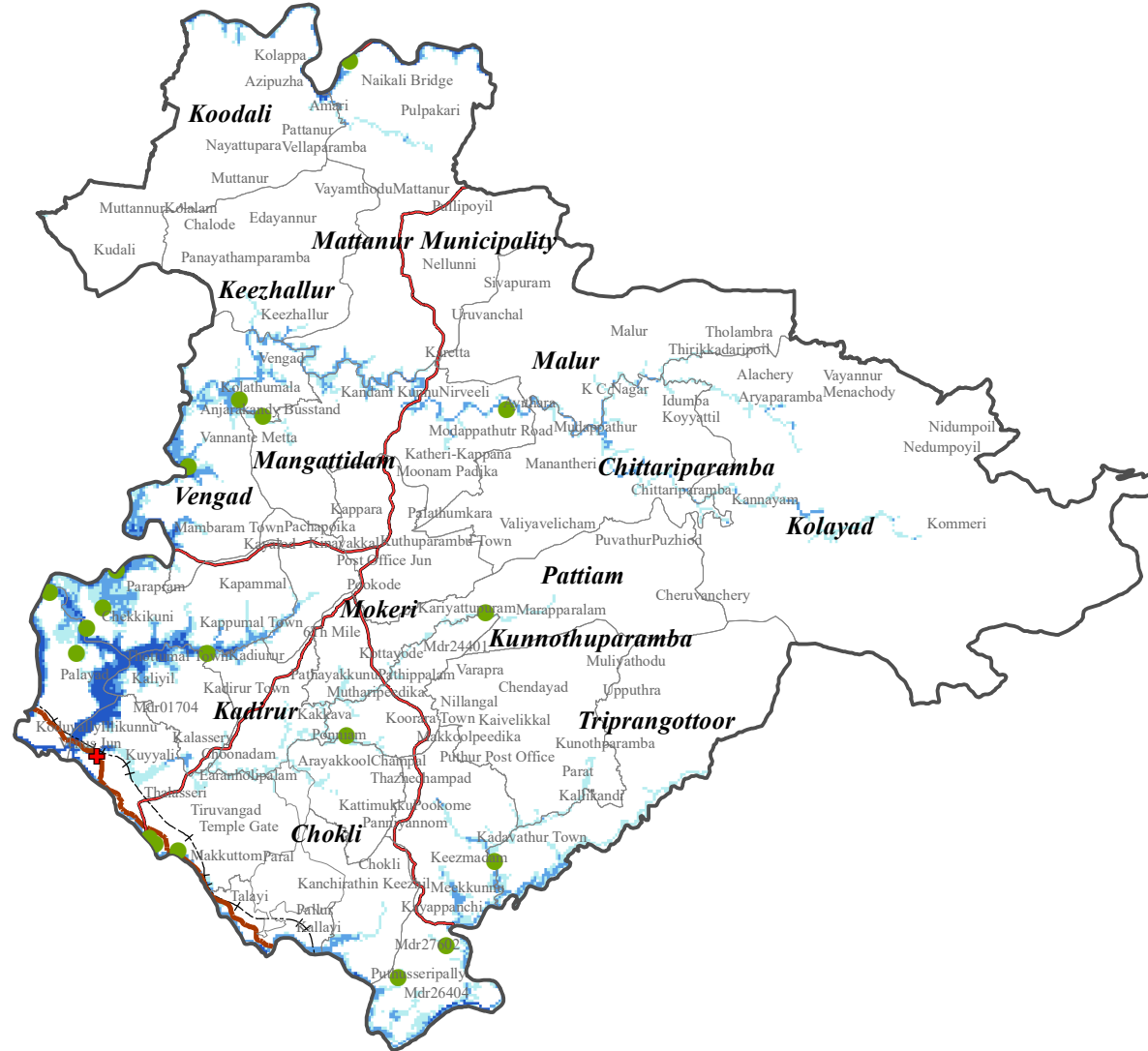
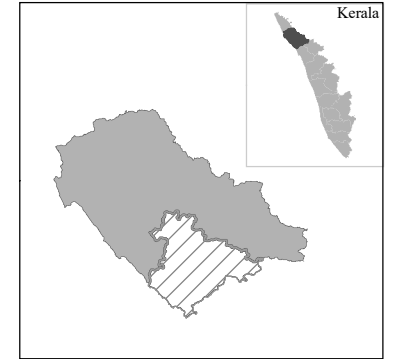
11°40'0"N

75°20'0"E

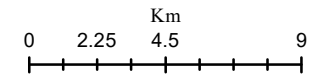
75°40'0"E

THALASSERY TALUK (KANNUR DISTRICT)

Flood Inundation (1 in 100 Year Return Probability)



Flood Water Level (m)		Legend	
	<4		Taluk Boundary
	4-8		National Highway
	8-12		State Highway
	>12		Railway
			Local Government
			Govt Schools
			Private Schools
			Hospital



RISK LAB, KSEOC
 Kerala State Disaster Management Authority
 Thiruvananthapuram
External boundaries are not verified. Reference purpose only
 Source: KSREC, KSDMA, UNEP, UN GRID, CIMA (Italy)

75°20'0"E

75°40'0"E

12°0'0"N

12°0'0"N

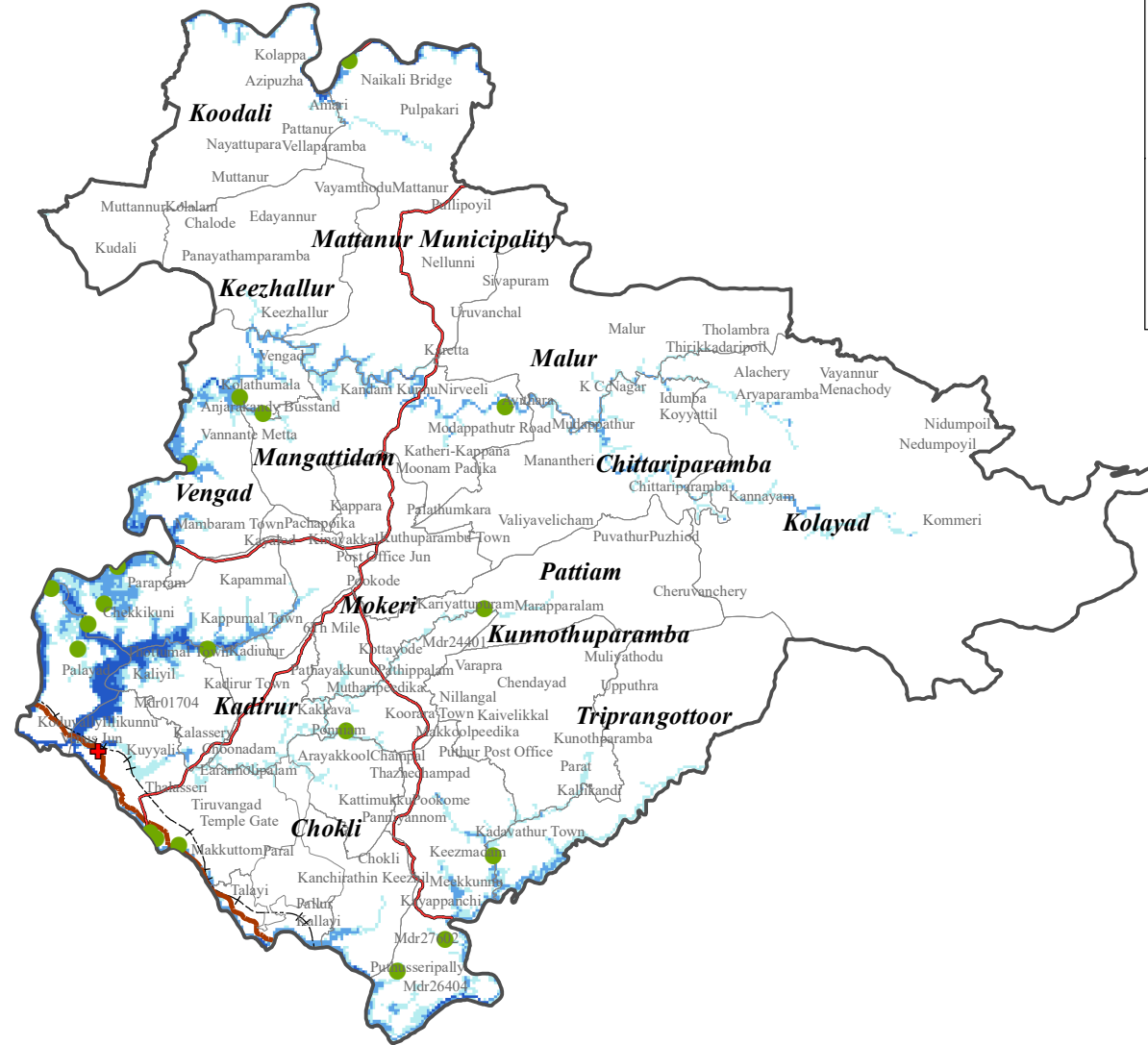
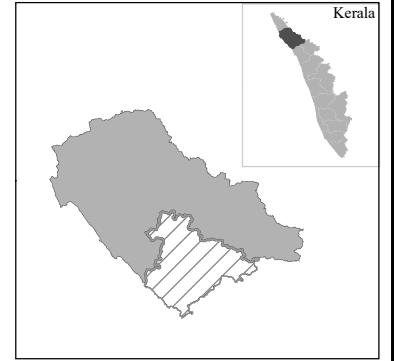
11°40'0"N

11°40'0"N

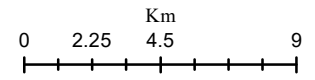
75°20'0"E

75°40'0"E

THALASSERY TALUK (KANNUR DISTRICT) Flood Inundation (1 in 200 Year Return Probability)



Flood Water Level (m)		Legend	
	<4		Taluk Boundary
	4-8		Local Government
	8-12		National Highway
	>12		State Highway
	Govt Schools		Private Schools
	Hospital		Railway



RISK LAB, KSEOC
 Kerala State Disaster Management Authority
 Thiruvananthapuram
External boundaries are not verified. Reference purpose only
 Source: KSREC, KSDMA, UNEF, UN GRID, CIMA (Italy)

75°20'0"E

75°40'0"E

12°0'0"N

12°0'0"N

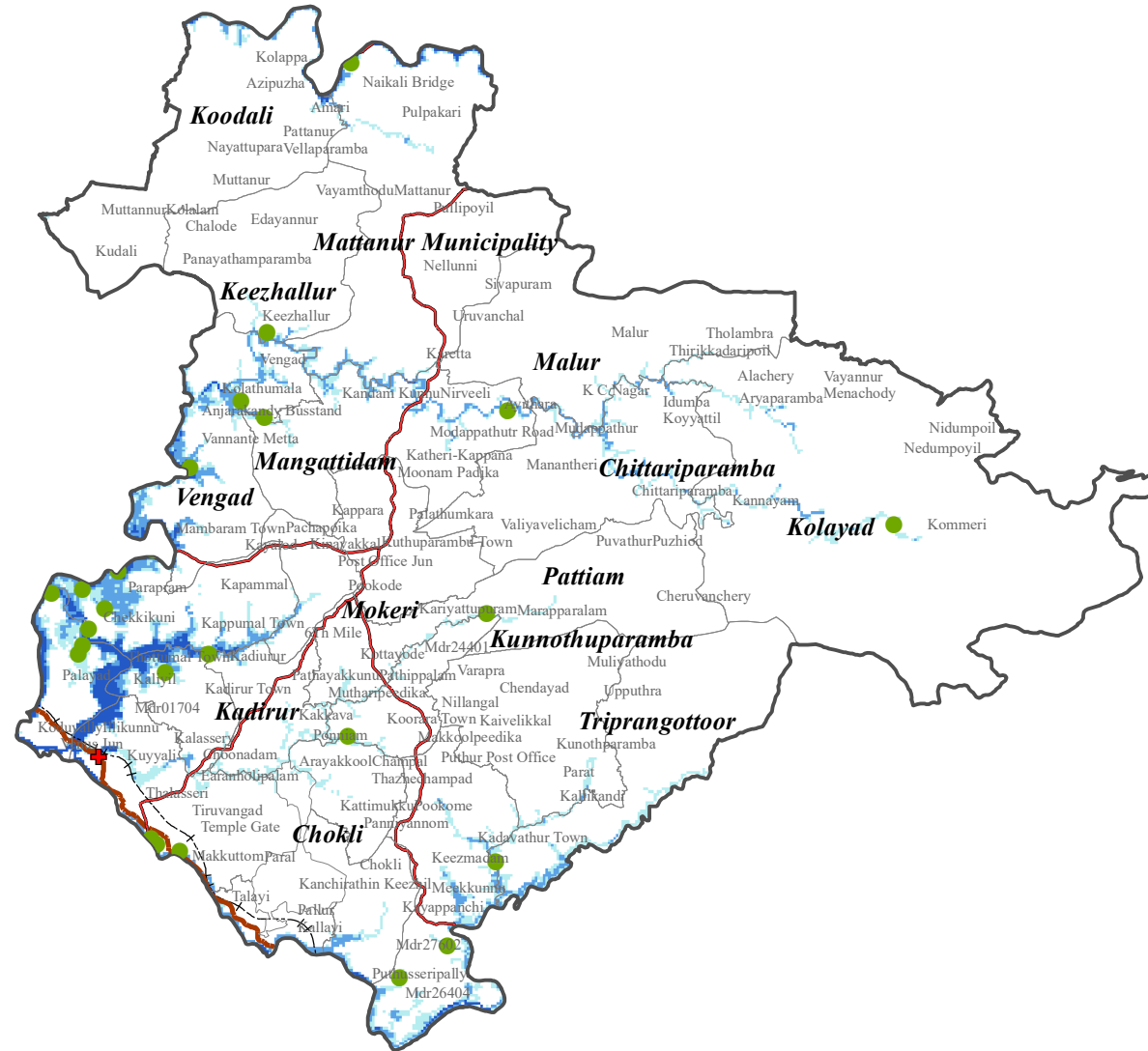
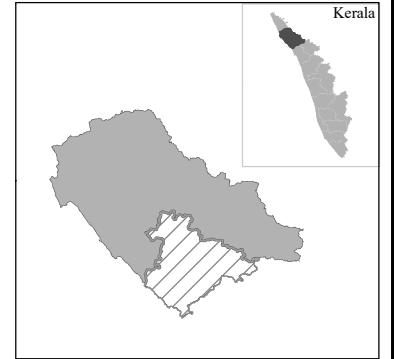
11°40'0"N

11°40'0"N

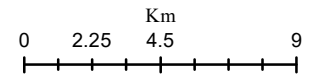
75°20'0"E

75°40'0"E

THALASSERY TALUK (KANNUR DISTRICT) Flood Inundation (1 in 500 Year Return Probability)



Flood Water Level (m)		Legend	
	<4		Taluk Boundary
	4-8		Local Government
	8-12		National Highway
	>12		State Highway
			Govt Schools
			Private Schools
			Hospital
			Railway



RISK LAB, KSEOC
 Kerala State Disaster Management Authority
 Thiruvananthapuram
External boundaries are not verified. Reference purpose only
 Source: KSREC, KSDMA, UNEP, UN GRID, CIMA (Italy)

75°20'0"E

75°40'0"E

12°0'0"N

12°0'0"N

11°40'0"N

11°40'0"N

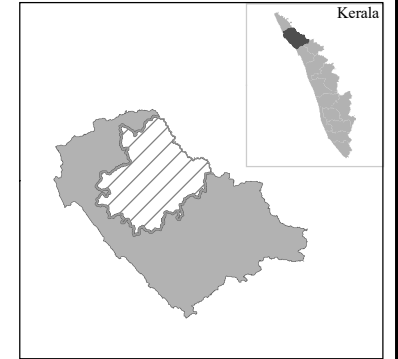
List of affected Schools/ Hospitals (LSG Wise)

KANNUR DISTRICT						
THALASSERY TALUK						
Name of affected Hospital/School (LSGI)	Return Probability (Historic)					
	1 In 10 Year	1 in 25 Year	1 in 50 Year	1 in 100 Year	1 in 200 Year	1 in 500 Year
Dharmadam						
School						
Andalur Junior Basic School						✓
Andalur Senior Basic School		✓	✓	✓	✓	✓
Melur North Jbs	✓	✓	✓	✓	✓	✓
Eranholi						
School						
Guruvilasam Pc BUPS						✓
Kadirur						
School						
Eranholi North LPS		✓	✓	✓	✓	✓
Keezhallur						
School						
Palayode LPS						✓
Kolayad						
School						
Palayathuvayal GUPS						✓
Mangattidam						
School						
Ayithara LPS	✓	✓	✓	✓	✓	✓
Mattanur Municipality						
School						
Pattuvam V.V.L.P.School Irikkur			✓	✓	✓	✓
Mokeri						
School						
Siva Vilasam LPS	✓	✓	✓	✓	✓	✓
Panoor Municipality						
School						
Kariyad New M LPS			✓	✓	✓	✓
Puliyambrom M UPS			✓	✓	✓	✓
Pattiam						
School						
Muthiyanga East LPS	✓	✓	✓	✓	✓	✓
Pinarayi						
School						
Kolad Jbs		✓	✓	✓	✓	✓
Parapram Jbs						✓
Pinarayi West BUPS				✓	✓	✓
Thalassery Municipality						
Hospital						
Tellichery Co-Op Hospital			✓	✓	✓	✓
Thalassery Co Operative Hospital			✓	✓	✓	✓
School						
Govt.LPS Gopalapetta	✓	✓	✓	✓	✓	✓
Govt.LPS Thalayi	✓	✓	✓	✓	✓	✓
St.Peter'S UPS Chalil	✓	✓	✓	✓	✓	✓
Triprangottoor						
School						
Kadavathur East LPS	✓	✓	✓	✓	✓	✓
Vengad						
School						
Kuriyot LPS	✓	✓	✓	✓	✓	✓
Nk Mmmm LPS	✓	✓	✓	✓	✓	✓
Oorpalli LPS	✓	✓	✓	✓	✓	✓

75°20'0"E

75°40'0"E

TALIPARAMBA TALUK (KANNUR DISTRICT) Flood Inundation (1 in 10 Year Return Probability)



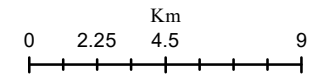
12°0'0"N

12°0'0"N

75°20'0"E

75°40'0"E

Flood Water Level (m)		Legend	
	<4		Taluk Boundary
	4-8		Local Government
	8-12		National Highway
	>12		State Highway
			Govt Schools
			Private Schools
			Hospital

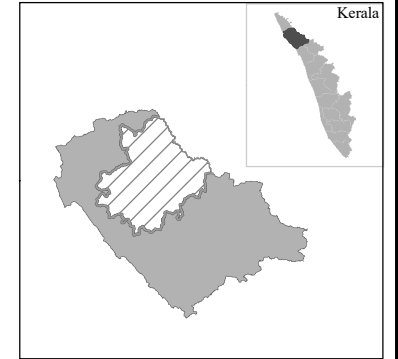


RISK LAB, KSEOC
 Kerala State Disaster Management Authority
 Thiruvananthapuram
External boundaries are not verified. Reference purpose only
 Source: KSREC, KSDMA, UNEP, UN GRID, CIMA (Italy)

75°20'0"E

75°40'0"E

TALIPARAMBA TALUK (KANNUR DISTRICT) Flood Inundation (1 in 25 Year Return Probability)



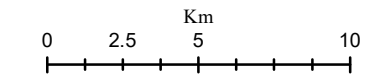
12°0'0"N

12°0'0"N

75°20'0"E

75°40'0"E

Flood Water Level (m)		Legend	
	<4		Taluk Boundary
	4-8		National Highway
	8-12		Govt Schools
	>12		Private Schools
			State Highway
			Railway
			Hospital

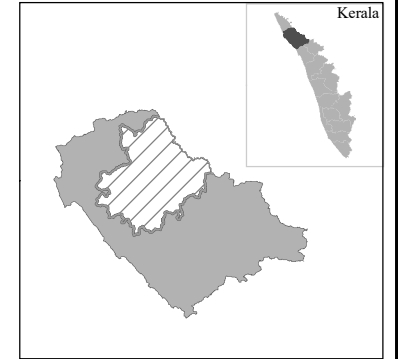


RISK LAB, KSEOC
 Kerala State Disaster Management Authority
 Thiruvananthapuram
*External boundaries are not verified. Reference purpose only
 Source: KSREC, KSDMA, UNEP, UN GRID, CIMA (Italy)*

75°20'0"E

75°40'0"E

TALIPARAMBA TALUK (KANNUR DISTRICT) Flood Inundation (1 in 50 Year Return Probability)



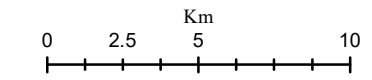
12°0'0"N

12°0'0"N

75°20'0"E

75°40'0"E

Flood Water Level (m)		Legend	
	<4		Taluk Boundary
	4-8		Local Government
	8-12		National Highway
	>12		State Highway
			Govt Schools
			Private Schools
			Hospital
			Railway

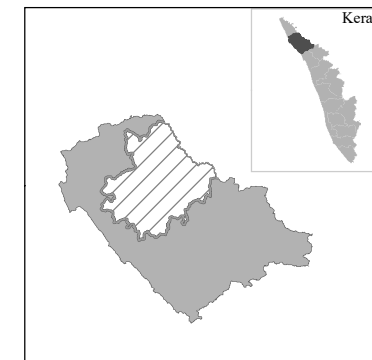


RISK LAB, KSEOC
 Kerala State Disaster Management Authority
 Thiruvananthapuram
External boundaries are not verified. Reference purpose only
 Source: KSREC, KSDMA, UNEP, UN GRID, CIMA (Italy)

75°20'0"E

75°40'0"E

TALIPARAMBA TALUK (KANNUR DISTRICT) Flood Inundation (1 in 100 Year Return Probability)



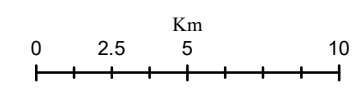
12°0'0"N

12°0'0"N

75°20'0"E

75°40'0"E

Flood Water Level (m)		Legend	
	<4		Taluk Boundary
	4-8		Local Government
	8-12		National Highway
	>12		State Highway
			Govt Schools
			Private Schools
			Hospital
			Railway

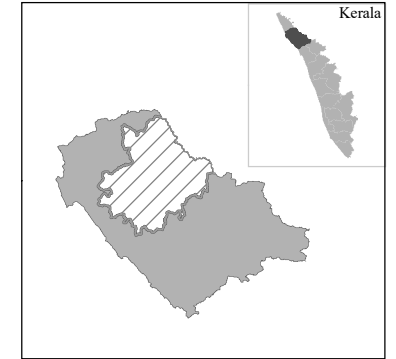


RISK LAB, KSEOC
 Kerala State Disaster Management Authority
 Thiruvananthapuram
External boundaries are not verified. Reference purpose only
 Source: KSREC, KSDMA, UNEP, UN GRID, CIMA (Italy)

75°20'0"E

75°40'0"E

TALIPARAMBA TALUK (KANNUR DISTRICT) Flood Inundation (1 in 200 Year Return Probability)



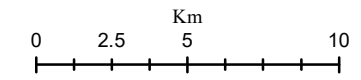
12°0'0"N

12°0'0"N

75°20'0"E

75°40'0"E

Flood Water Level (m)		Legend	
	<4		Taluk Boundary
	4-8		Local Government
	8-12		National Highway
	>12		State Highway
			Govt Schools
			Private Schools
			Hospital
			Railway

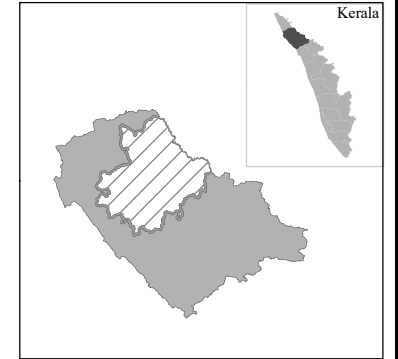


RISK LAB, KSEOC
 Kerala State Disaster Management Authority
 Thiruvananthapuram
External boundaries are not verified. Reference purpose only
 Source: KSREC, KSDMA, UNEP, UN GRID, CIMA (Italy)

75°20'0"E

75°40'0"E

TALIPARAMBA TALUK (KANNUR DISTRICT) Flood Inundation (1 in 500 Year Return Probability)



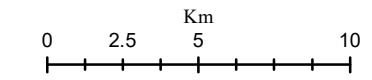
12°0'0"N

12°0'0"N

75°20'0"E

75°40'0"E

Flood Water Level (m)		Legend	
	<4		Taluk Boundary
	4-8		Local Government
	8-12		National Highway
	>12		State Highway
	Govt Schools		Private Schools
	Hospital		Railway



RISK LAB, KSEOC
 Kerala State Disaster Management Authority
 Thiruvananthapuram
External boundaries are not verified. Reference purpose only
 Source: KSREC, KSDMA, UNEP, UN GRID, CIMA (Italy)

List of affected Schools/ Hospitals (LSG Wise)

KANNUR DISTRICT						
TALIPARAMBA TALUK						
Name of affected Hospital/School (LSGI)	Return Probability (Historic)					
	1 In 10 Year	1 in 25 Year	1 in 50 Year	1 in 100 Year	1 in 200 Year	1 in 500 Year
Anthoor Municipality						
School						
G.U.P.S Morazha	✓	✓	✓	✓	✓	✓
Kolthuruthi L.P.School Nanisseri	✓	✓	✓	✓	✓	✓
Chengalayi						
School						
Govt Hs Kalikkadava	✓	✓	✓	✓	✓	✓
Perinthilery U.P.School Koyyam	✓	✓	✓	✓	✓	✓
Thavarool L.P.School Chengalayi						✓
Eruvessy						
School						
K.K.N.M.A.U.P. School Eruvassi	✓	✓	✓	✓	✓	✓
Kurumathur						
School						
Kurumathur South UPS	✓	✓	✓	✓	✓	✓
Kuttiattoor						
School						
Pavannoor L.P.School				✓	✓	✓
Malappattam						
School						
Malappattam Mopla L.P.School			✓	✓	✓	✓
Mayyil						
School						
Kayaralam A U P School	✓	✓	✓	✓	✓	✓
Koorlayithuruthi G.L.P.School Mayyil	✓	✓	✓	✓	✓	✓
Mullakkodi Mopila L.P.School	✓	✓	✓	✓	✓	✓
Sreekandapuram Municipality						
School						
G U P School Nidiyenga	✓	✓	✓	✓	✓	✓

