

## SITREP – 1, 1230 Hrs on 09/06/2025

### Explosion on WAN HAI 503 (IMO no – 9294862, Flag Singapore) West of Kerala

#### **1. Incident Overview:**

On 09 June 2025, an incident was reported at approximately 0950 hrs of a Singapore flagged container vessel Wan Hai 503 (IMO Number: 9294862), under direct management of Wan Hai Lines and currently en route to Nhava Sheva, experiencing a **container explosion** resulting in a **significant onboard fire**. The vessel was located at Lat. 11°37.6'N, Long. 074°37.4'E, approximately southwest of the Indian coastline, 44 nautical miles (nm) from Azhikkal, Kerala. The fire has engulfed the entire vessel and is currently adrift.



*Figure 1: Vessel WAN HAI 503*

#### **2. Response Actions Initiated:**

The Indian Coast Guard (ICG) and the Information Fusion Centre Indian Ocean Region (IFC-IOR) were immediately informed of the incident by the Directorate General of Shipping (DGS).



*Figure 2: Fire and explosion onboard*

The ICG and the Indian Navy responded swiftly, deploying three Dornier aircraft—two by ICG and one by the Indian Navy—equipped with life rafts for aerial support and situational assessment. Additionally, two ICG surface ships have been dispatched and are expected to arrive at the vessel's position within three hours. A total of five ships have been deployed by the ICG and are expected to reach the scene between 1430–1600 hrs IST. Further, Indian Naval Warship operating in the area has been diverted and expected to reach the location at approximately 1700 hrs.

The Flag Administration of Singapore has also been formally intimated regarding the incident. A communication was issued by the Directorate, requesting that the owners be advised to immediately appoint qualified salvors and firefighting experts to assess the cargo situation and provide expert guidance to support ongoing firefighting operations led by the Indian Coast Guard considering the nature of cargo carried onboard.

The nearby merchant vessel MV AMBRA and MV ONE MARVEL have also been alerted and directed to proceed to the site to provide immediate assistance after SAR SURPIC was activated.

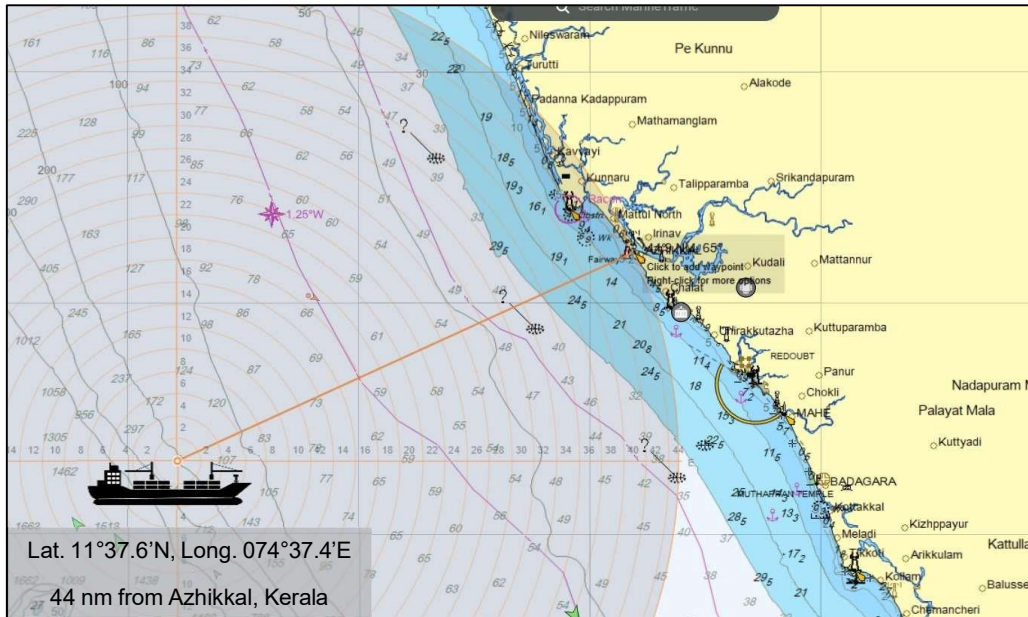


Figure 3: Incident Location

### 3. Present Status:

The vessel remains adrift and continues to emit smoke due to the onboard fire. The vessel had twenty-two (22) crew members onboard. Four (04) crew members are currently reported missing who went for the initial fire fighting response and five (05) have sustained injuries, out of whom two (02) crew members have suffered severe burns. The crew, predominantly of Taiwanese nationality, have abandoned the ship, 10 in lifeboat and 08 in life raft. The crew members will be picked up by ONE MARVEL.

### 4. Additional Support:

While the vessel is under direct management of Wan Hai Lines, Bernhard Schulte Shipmanagement (BSM) is providing the required details. Owners have been directed to appoint a professional salvor and firefighting expert immediately. Preliminary contact has been made with SMIT Salvage for specialized assistance, as informed by BSM. The Directorate is in continuous liaison with the Indian Coast Guard, Indian Navy and the ship management team for coordinated emergency response.

## **5. Current Vessel Condition:**

The vessel is drifting and the entire vessel has been engulfed by the fire. The vessel was initially instructed by Indian Coast Guard to alter course northwesterly away from the Indian coast, conditions permitting.

## **6. Navigational Hazards:**

The fire poses a significant risk of further explosions and potential structural compromise. Any drifting containers or subsequent hazards to navigation will be assessed upon arrival of ICG assets. All nearby traffic has been alerted to maintain safe CPA and speed reductions in the vicinity.

## **7. Coordination Measures:**

Ongoing coordination is being maintained between the Directorate General of Shipping, MRCC Mumbai, Indian Coast Guard, Indian Navy, Wan Hai Lines, and other stakeholders. Instructions have been issued for urgent appointment of salvage/firefighting experts, early assessment of cargo involved in the affected hold, and real-time updates to this office on all actions taken. Two-hourly operational updates from the owners are expected until the situation stabilizes.

## **8. Cargo Assessment:**

Owners have been requested to promptly assess and report the nature of cargo in the affected hold to ascertain any hazardous material presence. No information has yet been received on whether dangerous goods were involved in the explosion. Confirmation is awaited.