



Directorate General of Shipping

SITREP – 28, 1800 Hrs on 07/07/2025

Explosion on WAN HAI 503 (IMO no – 9294862, Flag Singapore) West of Kerala

The contents of this SITREP are based on both written and verbal inputs received from the stakeholders

1. Incident Overview:

Refer to SITREP – 2, 2200 hrs on 09/06/2025

2. Response Actions Initiated:

Refer to SITREP – 3, 2200 hrs on 10/06/2025

3. Present Status:

As of 1200 hours on 07 July 2025, MV WAN HAI 503 remains positioned beyond the Indian Exclusive Economic Zone (EEZ) at coordinates 07° 47.28' N, 074° 32.31' E. The vessel is maintaining a westerly course of 280° with a speed of approximately 0.7 knots under tow by Offshore Warrior.

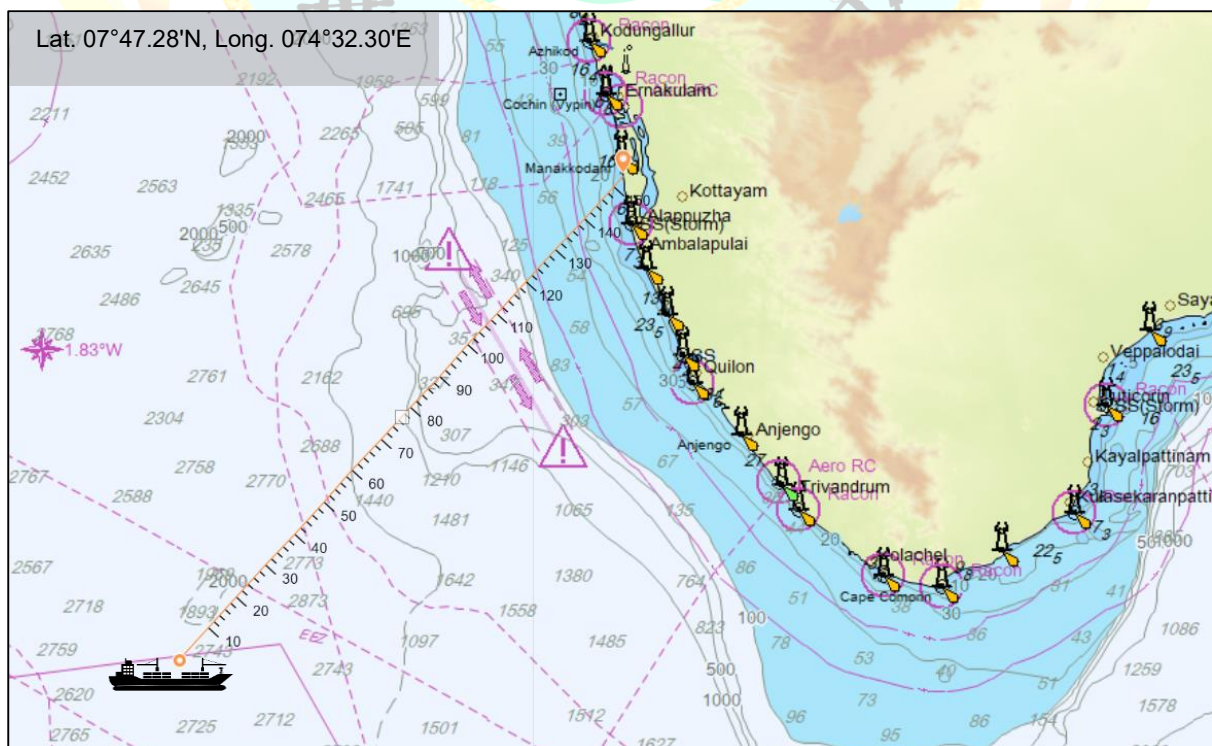


Figure 1: Position of the vessel on 07.07.2025 1200 hrs

Weather conditions at the site are moderate, with prevailing westerly winds of 15 to 20 knots, contributing to a steady sea state. Observations from the salvage team confirm the presence of light smoke emanating from the cargo hold area between bays 35 to 45. No visible flames have been reported at this time, indicating that the fire has been largely contained, though residual smouldering persists within localized hotspots. The vessel remains structurally intact, and there has been no escalation in onboard hazards during the reporting period.

4. Additional Support:

Multiple support assets remain deployed around MV WAN HAI 503 to assist with the firefighting, salvage, and logistical operations. Offshore Warrior continues to tow the casualty vessel, ensuring it is held beyond the Indian EEZ. A steel tow line has been connected to the stern of the vessel. Tug Advantis Virgo and SCI Panna remain on standby at the site, ready to engage in firefighting, boundary cooling, or emergency interventions as needed. Both vessels are equipped for immediate response should conditions onboard deteriorate.

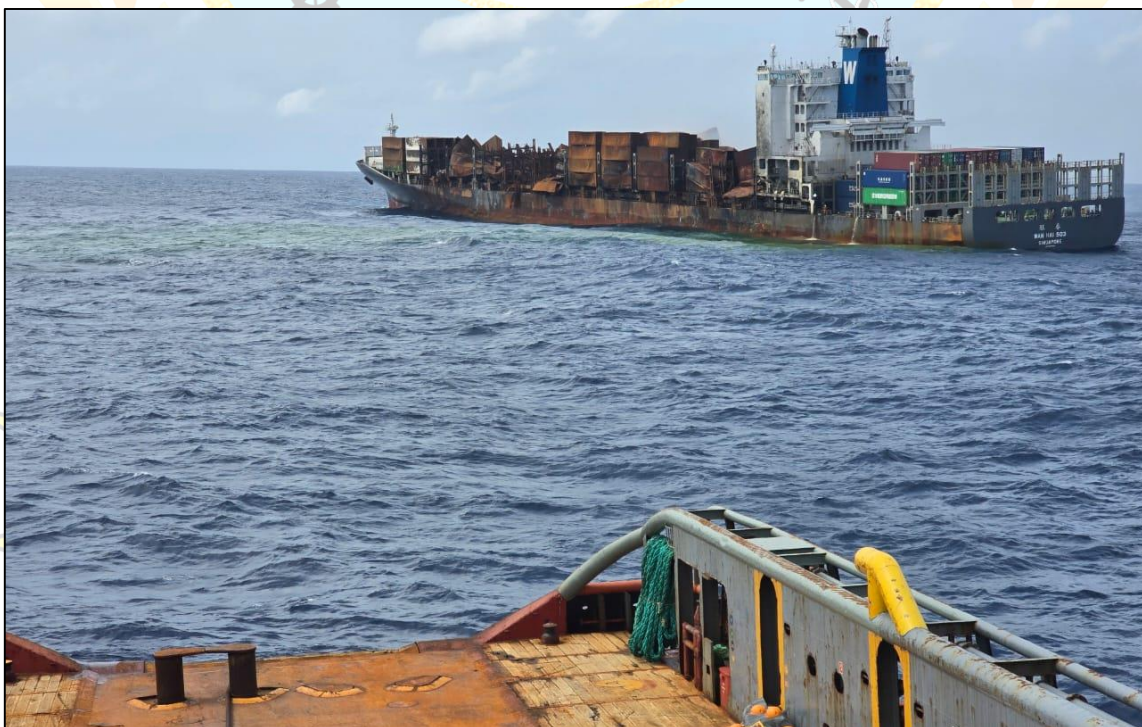


Figure 2: Vessel condition

Water Lily remains a key logistical platform, facilitating the transfer of salvage personnel, materials, and essential supplies, including food and equipment, between the casualty vessel and support vessels. This logistical support is critical for maintaining 24/7 salvage operations, particularly in view of the extended offshore positioning of the vessel.

Coordination between these assets continues to be maintained to ensure operational readiness, while salvage activities onboard are paced according to weather and safety conditions.

5. Situation Assessment

The situation onboard MV WAN HAI 503 remains under control but with close operational monitoring. The residual smoke in the midship section indicates the presence of isolated smouldering zones, though active flame presence has not been observed. Boundary cooling operations have been kept on standby, with Advantis Virgo and SCI Panna prepared to initiate firefighting or containment measures if there is any change in fire intensity.

The vessel's position outside the EEZ continues to be managed effectively by Offshore Warrior, maintaining a safe distance from Indian coastal waters.

Water Lily remains engaged in routine transfer operations, ensuring that salvage teams and materials are moved efficiently to support dewatering, stability management, and fire suppression systems onboard.

Moving forward, the immediate operational focus will remain on continuous towing operations to maintain safe positioning outside the EEZ, readiness of firefighting and boundary cooling teams onboard support vessels, and sustaining logistical lines for personnel rotation and material transfer. Salvage teams will continue to monitor hull temperatures and onboard conditions, with further assessments planned as weather permits.

Efforts remain aligned with the broader objective of stabilizing the vessel, minimizing environmental risk, and preparing for eventual relocation to a Port of Refuge when feasible.

6. Navigational Hazards:

Refer to SITREP – 3, 2200 hrs on 10/06/2025

7. Coordination Measures:

Refer to SITREP – 3, 2200 hrs on 10/06/2025

8. Cargo Assessment:

Refer to SITREP – 3, 2200 hrs on 10/06/2025



**Directorate General of Shipping, 9th Floor Beta Building, I-Think Techno
Campus, Kanjurmarg (East), Mumbai - 400 042 (India)**